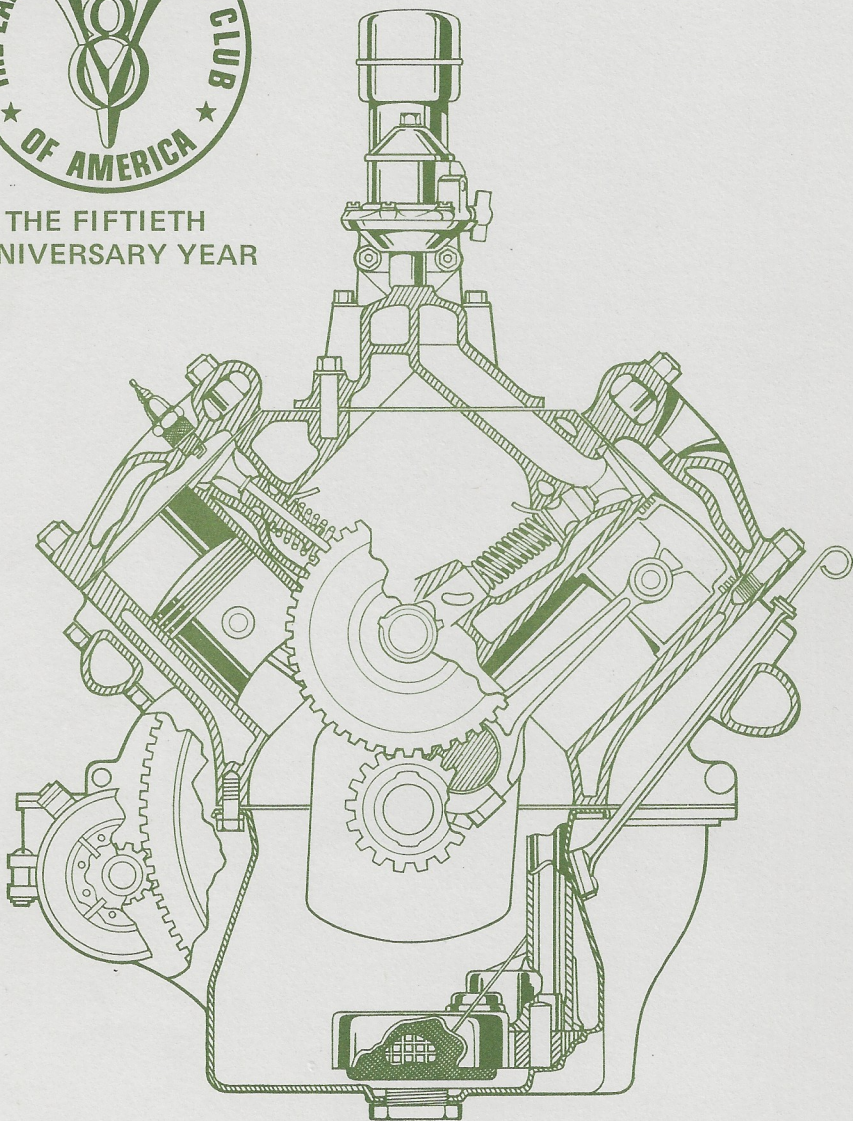


MAY



THE FIFTIETH
ANNIVERSARY YEAR



Drive Lines

The Valley 's

1982 OFFICERS

PRESIDENT	Bob Rose 362-4842
VICE PRESIDENT	John Powell (805) 647-3494
SECRETARY	Shel Harriman 398-3151
TREASURER	Bill Culp 344-0969
ACTIVITIES COMM.	Don Dupree 894-7255
	John Busk 348-0111
	Ernie Baily (805) 522-9674
	Ernie Baily (805) 522-9674
HISTORIAN	Kent Lowry 368-9830
DIRECTOR	Jim Clary 349-7261
ACCESSORIES	Paul Kirk 886-7872
MEMBERSHIP	Al Spencer 761-1734
FELLOWSHIP	Albie Cortez 363-9460
REFRESHMENTS	Larry Caplan 363-2849
CO-EDITORS	Irv Warren 780-7109 687-0656

Drive Lines

Published by

SAN FERNANDO VALLEY CHAPTER 40
of the EARLY FORD V8 CLUB of AMERICA

P.O. Box 96
RESEDA, CA. 91335

PRESIDENT'S MESSAGE

April was a great month for The Valley V-8's. It was probably the most satisfying and rewarding period of time I've personally experienced since joining the group.

On Saturday April 10th, a bunch of the members met at Al Spencer's place, and darn near built a '40 Ford in one day. (well, not really)... Good old Jack Miles organized a "work crew", the purpose of which was to get Al's beautiful Woody on the road. Larry Caplan, Irv Warren, Terry Smith along with Al and Jack, & probably a few more after I left, would have made Henry Ford proud (or mad, I haven't figured out which) as they put the car in such condition that finishing it should no longer be a real problem. Al should be rolling in the very near future. A really wonderful gesture, and a fantastic job fellows.....

For those who missed Solvang, shame on you. Don Durkee really had his act together, and put on an unbelievably successful tour. My sincere thanks for your splendid and unselfish efforts. Don was ably assisted by John Busk. Read about it in this issue, and see the photos too.

Don't forget our big auction on May 2nd. Our regular meeting with feature Bill Norton, at the BUY AT YOUR OWN RISK, GUARANTEED PARTS AUCTION. Bill will guarantee that it is your risk, and not his.....so bring those items for auction. Some choice items will be available, so bring in the goodies, someone will buy them. Remember, this is a club fund raiser, with all profits going to a worthy cause;us...

See you on May 2nd at the auction. 7:30 PM

AT CROSSROADS
DON'T JUST
TRUST YOUR LUCK
THE OTHER CAR
MAY BE A TRUCK
BURMA-SHAVE

*** HAROLD SELSON
WE SEND YOU GREETING
THE REFRESHMENTS
ARE YOURS
AT THE NEXT MEETING
BURMA-SHAVE

Bob Rose
##

SECRETARY SEZ . . .

Early V-8's driven to the April 4th meeting were as follows:

Don Dupree	'46 pickup
Bill Culp	'29 Roadster
Bob Rose	'41 Convertible
John Powell	'41 Coupe
Bill Woods	'40 Merc coupe
Ed Konecko	'35 Convertible sedan
Frank Williams	'40 Fordor
Harold Selson	'36 5 W Coupe
Ralph Froulain	'40 Convertible

Don Durkee announced that all the hotels are booked solid in Solvang for the tour on April 17th. Several members from the Southgate chapter will tour with us.

Some of our members are planning on entering the May 15th Car Show at the Burbank Lutheran School

Don't forget to donate a saleable Ford part at the May 2nd meeting. You can't a Ford to miss the old auctioneer, himself, Bill Norton of (Valley) Obsolete fame. It's a once a year one man show and the goodies will be there including a cover of your choice from Andy Cohen's Beverly Hills Car Covers. There will also be goodies donated by Bill Norton and by Bob Drake. So bring money!

July 24th is San Sylmar and August 1st may be a Ford film strip presentation by Gordie Chamberlin (that's also Deuce Day - I have to plug it 'cause I run it).

Bill Woods is advertising a neighbors V-8 yard sale in La Canada (late May). He confessed to skimming off some of the cream, but there's still a few grand worth of parts available.

Alby Cortes got John Powell to supply dessert. Harold Selson is next on the hook.

Ernie Bailey's name tag was drawn but he missed out on \$10 by staying home - Next month \$15 bucks - and then Norton can con you out of it.

The roster is about to go to press so late dues payers may not get to see their names in print.

The April feature presentation was made by Norb Fournier who is in the radio repair business. Several Ford radios, from 1934 - 1940, were on display. Norb gave an interesting talk. It appeared that he will probably get some business from our members. General overhaul of a radio in reasonable condition might run about \$80 and be a prompt turn around. However, don't expect basket cases to be in that range nor time frame either when Norb has to search for parts.

SHEL HARRIMAN

UPCOMING EVENTS

- May 2 Valley V8 Meeting at Valley Federal Savings Nordhoff at Reseda Blvds. Northridge
Tire Kicking 7:00, Meeting Starts 7:30
- May 15 Burbank Car Show at Lutheran High School
7500 N. Glenoaks Blvd. Info 213-363-8380
- May 16 Swap Meet at Santa Ana College, 17th and Bristol, Info 714-541-2179
- May 30 Swap Meet at Fallbrook Calif. High School
at S. Mission Road, Info 714-728-2250
- May 30 Swap Meet at Santa Ana Calif. Centennial Park, Edinger and Fairfax Info 714-891-7258

On Saturday, April 17th, under incredibly beautiful weather conditions, and after breakfast at Howard Johnsons in Calabasas, THE DON DURKEE GRANDDADDY TOUR TO SOLVANG began. At about 9:00 AM, and over hill and dale, the noble caravan began a fantastic weekend of fun.

Picking up fellow V-8'ers along the way we settled into Ojai for lunch. Continuing around Lake Casitas with problem free driving we arrived in Montecito at the home of Frank and Alida Freda, who wined, dined and partied us in most gracious fashion, their beautiful residence overlooking the Pacific Ocean. Frank has a neatly restored '35 Cabriolet, so our cars also felt quite at home with their newly found friend.

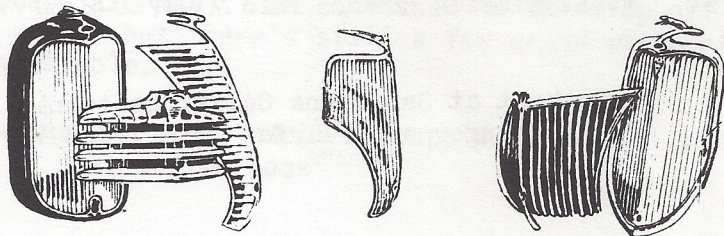
After arriving in Solvang and dining and wandering at our leisure, Don Durkee and John Busk hosted a knock down drag out cocktail party, complete with a magician and an X-Rated singer guitarist. Even had some members of a T-Bird club in town for the weekend drop by (they said they heard the noise from the street) and help pass the time, partaking freely of the fun and drink..

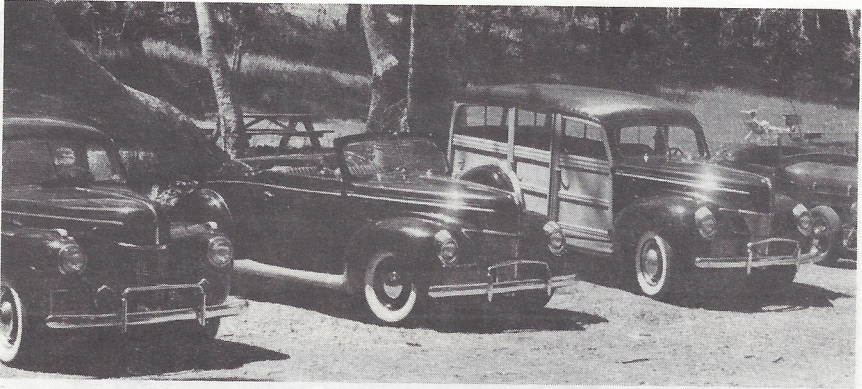
Next morning after breakfast and shopping, the club put on a hotdog and beer lunch at a nearby park, and by 2:00 we were on the way home.

In Solvang we were joined by about six more V-8ers, one with a beautiful '36 3 window coupe, another had a fine '35 Pick-up. Also a guy came into our motel parking lot with a nice '40 Plymouth business coupe. He said he saw the cars and would like to join the fun. John Busk said, as big as he was he would be welcome to join us anywhere he wanted too.....He made himself quite at home.

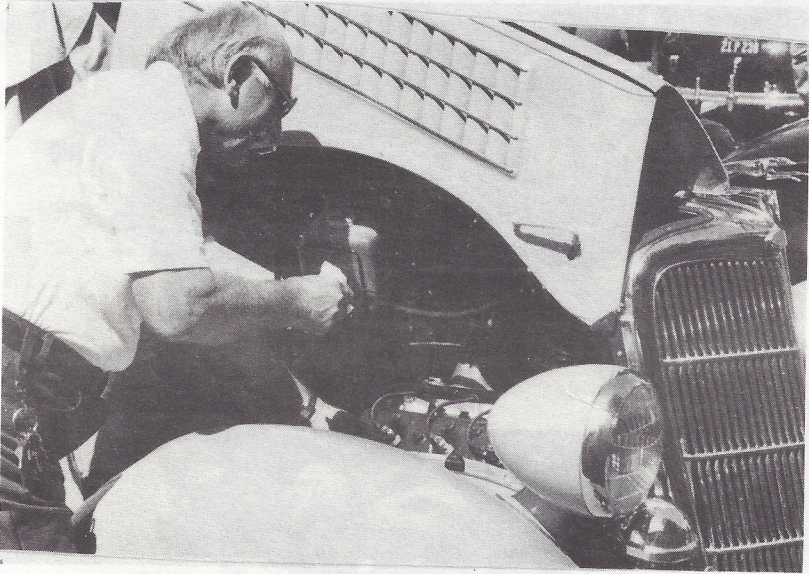
In all, thirty two (32) vintage iron, including the Plymouth, joined us, and a total of seventy seven (77) people made the Solvang tour probably the most successful event of its type in the history of The Valley V-8's.....

Bob Rose





JOHN'S '41, RALPH'S '40, and BLACKY'S WOODY

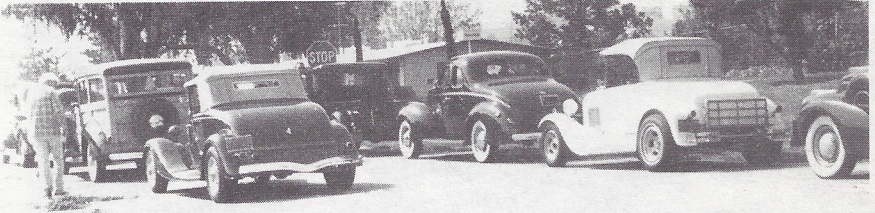


ED KONECKO IN ACTION

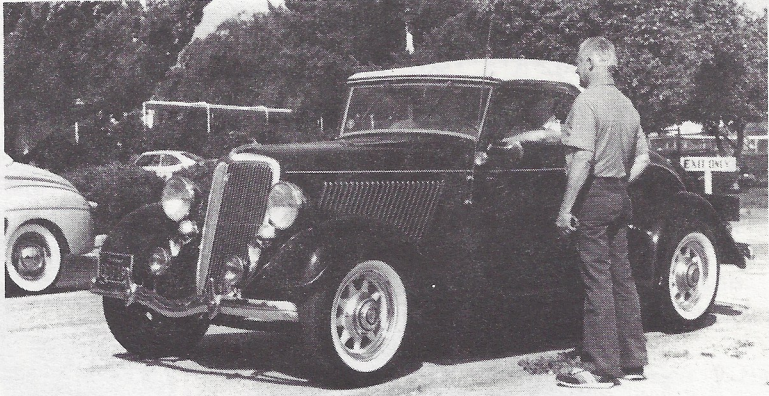


THE GOOD SECRETARY, SHEL HARRIMAN

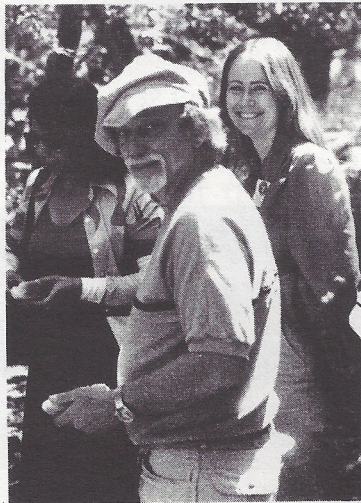
MORE SOLVANG '82



VINTAGE LINE-UP



DON DUPREE AND THE FAMILY
JEWEL.....



***** PAUL KIRK AND MARY FINLEY *****

AND STILL MORE SOLVANG '82



HARRIETT ROSE AND ALIDA FREDA, OUR HOSTESS IN MONTECITO



OUR V-8 CAKE, PRESENTED BY ALIDA



ON THE ROAD AGAIN.....

- CAR PARTS SALE -

The following is a list of early FORD/MERCURY auto parts that were not used during the restoration of a 1940 Ford. Most parts are used and from the 1940-1948 era. All listed parts will be available, at extremely reasonable prices, between the hours of 10:00 am - 3:00 pm on Saturday/Sunday, May 15/16, 1982 and May 22/23, 1982.

Address: 4804 Palm Drive, La Canada, CA

Phone: (714) 640-9438

EVERYTHING MUST GO!!

QUAN	DESCRIPTION	EST PART #
3 ea.	Cluster 29 Teeth	022A-7113
2 ea.	Cluster 28 Teeth	51A-7113
1 ea.	Cluster 28 Teeth-Low Gear Stright	48-7113
1 ea.	Gear Main Drive 19 Teeth	26H-7017
5 ea.	Gear Main Drive 16 Teeth	81A-7017
7 ea.	Gear Main Drive 15 Teeth	022A-7017
1 ea.	Gear Main Drive 14 Teeth	67-7017
13 ea.	Low Gear Helical	01A-7100
2	Low Gear Straight	67-7100
21 ea.	Second Gear	81A-7102
9 ea.	Reverse Idler Helical	68-7141
4 ea.	Reverse Idler Straight	B-7141
15 ea.	Synchro Sleeve Straight Large	01A-7106
2 ea.	Synchro Sleeve Straight Small	B-7106
7 ea.	Synchro Steeve Taper	48-7106
12 ea.	Front Trans Ball Bearing Large	51A-7025
10 ea.	Rear Trans Ball Bearing Small	51A-7065
15 ea.	Synchro Hub (1 piece)	B-7108
7 ea.	Synchro Hub (2 piece)	81A-7105
14 ea.	Main Shaft Fine Helical Short	81A-7061
2 ea.	Main Shaft Fine Helical Long	59C-7061
3 ea.	Main Shaft Heavy Helical Long	68-7061B
2 ea.	Main Shaft Straight	B-7061
9 ea.	Counter Shaft	B-7111
7 ea.	Idler Shaft	B-7140

QUAN	DESCRIPTION	EST PART #
7 ea.	Shift Shaft (2nd & Hi)	81A-7241
7 ea.	Shift Shaft (Low & Rev)	81A-7240
7 ea.	Shift Fork (2nd & Hi)	91A-7230
7 ea.	Shift Fork (Low & Rev)	68-7231C
3 ea.	Shift Shaft (Side/Long Throw)	-7280
3 ea.	Shift Shaft (Side/Short Throw)	-7282
3 ea.	Shift Levers (Outside-Long)	-7285
3 ea.	Shift Levers (Outside-Short)	-7290
3 ea.	Shift Ford (Side, 2nd/Hi)	91A-7230
3 ea.	Shift Ford (Side, Low/Rev)	68-7231C
1 ea.	Can Misc. Trans Parts	
2 ea.	Cluster Spacer	8M-7129
2 ea.	Clutch Throw Out Shaft Bushing	51A-7508
2 ea.	Transmission Housing Side	
6 ea.	Transmission Housing Top	
3 ea.	Transmission Shift Plate Side	-7222
7 ea.	Transmission Shift Plate Top	-7204
6 ea.	Top Shift Levers	-7210
1 ea.	1953, 3 Speed Manual W/ O'Drive	
10 ea.	Retainer Fron Bearing	78-7050
6 ea.	Rear Transmission Mount	78-7085
6 ea.	Clutch Release Bearing	78-7580
3 ea.	Torque Tube Trans Ball	-4513
2 pr.	Torque Tube Trans Ball Halves	-4520
4 ea.	Clutch Fork	-7515
7 ea.	U-Joint	B-7090
2 ea.	Drive Shaft Long	68-4605
1 ea.	Drive Shaft Short	-4605
2 ea.	Torque Tube Long	-4507
1 ea.	Torque Tube Short	-4507
8 ea.	Axle Housing - Rusty	
5 ea.	Differential Housing - Banjo	48-4017
3 ea.	Ring & Pinion Set 34-9	68-4209
4 ea.	Spider Gear Assembly	
1 ea.	Speedometer Drive Gear 21 Tooth	-17290
3 ea.	Speedometer Drive Gear 19 Tooth	-17290
3 ea.	Oil Pump - Long	-6600
4 ea.	Oil Pump - Short	-6600
1 ea.	Oil Pump - Broken Melling Housing	
1 ea.	Rear Axle 31 5/16"	-4235
6 ea.	Rear Axle 31 7/8"	-4235
1 ea.	Rear Axle 32 11/16"	-4235
3 ea.	Water Pump Left	-8502
4 ea.	Distributor Bodies - Front Mount	

EYE TEST FOR THE MONTH OF MAY!!!!
(Our thanks to Bill Woods for this unbelievable offer)

QUAN	DESCRIPTION	EST PART #
1 ea.	Ignition Coil	1GA-12036
1 ea.	Radio 1953	
1 ea.	Radio Motorola - Remote	
1 set	Headers & Cut-Out Pipes 1940	
4 ea.	Cylinder Heat 59-A	59A-6050
2 ea.	Cylinder Heat A	91A-6050
2 ea.	Cylinder Block 59-A	
3 ea.	Crankshaft 46-48 Ford	
2 ea.	Flywheels 42-48 Ford	
1 ea.	Fan-Intake Manifold Mounted	
	42-48 Ford or Mercury	
3 ea.	Foot Pedal Arm Clutch	
3 ea.	Foot Pedal Arm Brake	
1 ea.	Handbrake Lever 1947 Mercury	
1 pr.	Trunk Hinges 1947 Mercury	
1 ea.	Head Light Rim 1937	
3 ea.	Sealed Beam Head Lamp "Bulbs"	
4 ea.	Hood Hold-Down (Latches)	
19 ea.	Brake Shoes	
3 ea.	Starter Motors	
1 ea.	Generator	
1 ea.	Steering "Knuckles" Assemblies	
2 ea.	Master Cylinders	
2 ea.	Steering Wheels	
3 ea.	Steering Shafts w/Worm Gear 37-40 Ford	
3 ea.	Column Shift Linkages	
1 ea.	Air Cleaner	
1 ea.	47 Mercury Dick Handle & Base	
2 ea.	47 Mercury Beauty Bands	
1 ea.	49-53 Ford Beauty Bands	
1 ea.	48 Ford Beauty Bands	
	Disassembled Carburetors	
3 ea.	Stromberg "97's"	
1 ea.	Ford 1 1/16"	
3 ea.	Ford "94's"	
1 ea.	Chandler Grove "94"	
1 ea.	Holley "847"	
1 ea.	Clutch - Small	
2 ea.	Clutch - Large	
24 ea.	Connecting Rods	
1 lot	Valve Guides - Used	40-6510
1 lot	Valve Springs - Used	78-6513
4 ea.	Valve Guides - New	40-6510
44 ea.	Valves	11T-6505
5 ea.	Fuel Pumps	

QUAN	DESCRIPTION	EST PART #
6 ea.	Shock Absorber	
24 ea.	Tappets	91A-6500
24 ea.	Wrist Pins	
1 pr.	1939 Ford Rear Fenders (Exc. Cond)	
1 pr.	1947 Mercury Rear Doors (From 4-Door)	
6 ea.	King Pins	
11 ea.	Tie Rod Ends	
3 ea.	Front Axles & "Wishbones"	
	1940 & 1942-48 Ford or Mercury	
2 ea.	Engine Front Cover (Where Dist. Mounts)	
3 ea.	Camshafts - Stock 1940-48 Ford or Merc	
3 ea.	Camshaft Oil Pump Drive Gear	6652
1 ea.	1942-48 Ford Heater	
1 ea.	1937 Zepher Radiator	
1 ea.	White Truck Radiator	
	21 1/4"W x 24 1/2"H x 3"	
1 pr.	Adjustable Seat Supports	
1 ea.	Ford Cowel Vent Lever & Knob, 1942-48	
1 ea.	47 Mercury Dash Less Instruments	
-	Brake Backing Plates	
-	1939-41 Ford or Mercury	
-	1942-48 Ford or Mercury	
-	16" Ford or Mercury Wheels, 1940	
-	Exhaust Manifolds 1940 & 1942-48	
-	Intake Manifold, 1940 & 1942-48	
-	Misc. Brake Drums, 1940-48 Ford & Mercury	
-	Misc. Spring Leafs	
-	1947-48 Mercury Hub Caps	

VINTAGE CARS DRIVEN ON THE SOLVANG
TOUR

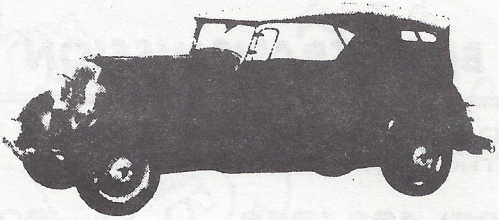
BILL CULP.....	29	Roadster
JOHN FREDRICKS.....	32	Roadster
SHEL HARRIMAN.....	32	Victoria
AL MCKEE.....	32	4 Door
BILL BRANDENBURG.....	33	Roadster
JACK MCKEE.....	34	4 Door
DOUG PETERSON.....	34	Pick-up
DON DUPREE.....	34	Cabriolet
ED KONECKO.....	35	Conv. Sedan
DUANE MIROBALLI.....	35	Pick-up
CHUCK KLINE.....	36	3 Window cpe.
JOHN MURPHY.....	37	Coupe
DON TRUNICK.....	38	Std. 4 Dr.
ED WARNOCK.....	39	Convert.
ALAN BERLIN.....	39	Dlx. Cpe.
JACK MILES.....	39	Dlx. 2 Dr.
LARRY CAPLAN.....	40	Dlx. 4 Dr.
FRANK WILLIAMS.....	40	Dlx. 4 Dr.
DON DURKEE.....	40	Convert.
BLACKY BLACKWELL.....	40	Woody
JOHN WOLF.....	40	Dlx. Cpe.
LEN BARBIERI.....	40	Dlx. Cpe.
RALPH FROILAND.....	40	Convert.
ELWOOD WILLIAMS.....	40	Dlx. Cpe.
PAUL KIRK.....	40	Buick 4 Dr. Conv.
AL STEWART.....	40	Plymouth Cpe.
JOHN POWELL.....	41	Spec. Cpe.
BOB ROSE.....	41	Convert.
JAY HARRIS.....	46	Convert.
AL CURRY.....	50	Pick-up
AL SPENCER.....	56	4 Dr.
LARRY YOUNG.....	65	Mustang
FRANK FREDA..(Our Host in Montecito)..	35	Cabriolet



Yes, this car ~~made~~ the entire 350 miles, barely !!



The Early Ford 
CLUB OF AMERICA



Canoga Auto Parts Co.
340-1536

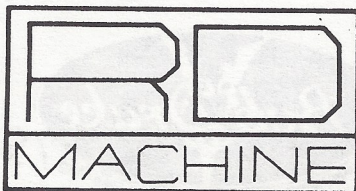
Daryl Fielder

GENERAL MANAGER

21422 SHERMAN WAY
CANOGA PARK, CALIF. 91303

THIS SPACE FOR RENT

(See Bob Rose or Larry Caplan)



Ron Dunlop

8726 Remmet Ave
Canoga Park, CA 91304



BOBS TRANSMISSION SERVICE

DISCOUNT PRICES • 20 YEARS EXPERIENCE
THOUSAND OAKS • CAMARILLO

(805) 482-1868

(805) 492-2132

All★in★1 Printing

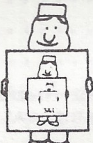
THE MOST ECONOMICAL, HASSLE-FREE WAY TO BUY PRINTING IN PASADENA OR
ALMOST ANYWHERE! / 116 W. DEL MAR BLVD. / PASADENA CA 91105 / (213) 795-5554



Typesetting



Quick Printing



Photostats



Art & Design



Photography



Custom Printing

ASK FOR ALLAN FRANKLIN

MOTORING ACCESSORIES

CUSTOM FIT CAR COVERS V-8 FORDS



Andy Cohen

200 S. ROBERTSON BLVD.
BEVERLY HILLS, CALIFORNIA 90211

657-4800



7846 ALABAMA AVENUE • CANOGA PARK, CALIFORNIA 91304

(213) 346-6199

Bill

Norton

& Auction

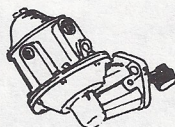
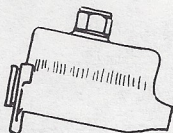
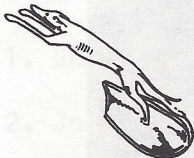
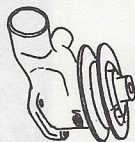
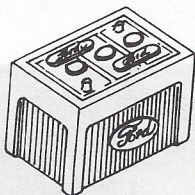
SUNDAY MAY
2nd



7:30 P.M.

PRESENTED By:

THE VALLEY V-8's



BRING PARTS!

BUY PARTS!

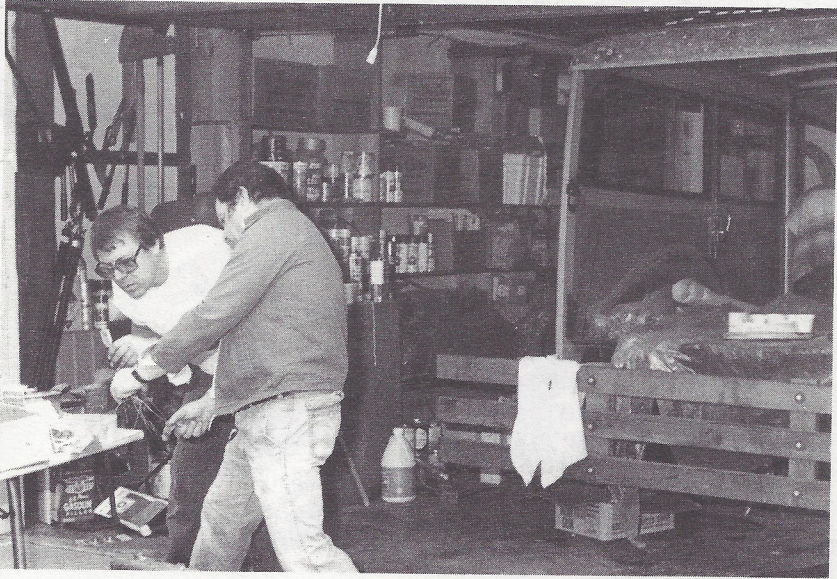
***** WORKING ON THE WOODY *****



JACK "THE PROFESSOR" MILES AND TERRY
SMITH



TUNE-UP MASTERS WOULD BE PROUD OF
LARRY CAPLAN



"IRV, DO YOU KNOW WHAT YOU'RE DOIN'???"
"NO AL, BUT IF YOU HUM A FEW BARS I'LL
FAKE IT....."

NEW MEMBERS DURING APRIL

The following three new members joined during April. Welcome aboard and you just barely made it in time for the 1982 roster..

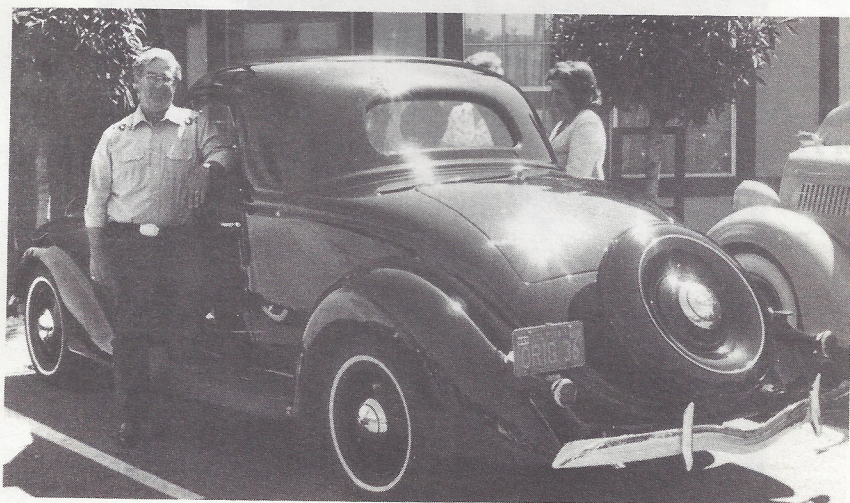
1. Ralph and Gail Froiland '40 Conv.
2. John and Karen Monroe III '36 Coupe
3. Mary Finley '40 Conv.

16
Did You Know ?????

Don and Mary Durkee ran three dry runs of the Solvang Tour prior to leading our group over the course April 17-18 . They really believe in the adage "keep doing it until you get it right". There wasn't one turn out of place in the entire 350 miles.

Even though our two most recent upcoming cars of the month were trying their best to make it in time for the Solvang Tour there is good news to report. Al Spencer expects his '40 Woody to be going down the road in the next several weeks and old "Mary 36" is making a valiant effort to make the Ojai run with the Ventura V8's this month on May 15 (?). Good luck Al and Don.

We may be needing to find a new shopping center to sponsor our July 4th Car show. The Von's people are not sure if they will be having a festival in their parking lot this year. We will find out by our May Meetingbe thinking about some other choices. Car Show or not we will still have our Pool Party.



Chuck Kline and his 36 Coupe .. A Solvang Resident

Your **COMPLETE AUTOMOTIVE LINES**
PARTS STORE



CAL AUTO STORES

**WE HAVE ONE OF THE BROADEST SELECTIONS OF
DOMESTIC & FOREIGN AUTO PARTS AVAILABLE IN THE WEST!**


- ✓ COMPLETE MACHINE SHOP SERVICE
- ✓ COMPLETE LINE OF REBUILT ENGINES & PARTS
- ✓ SATISFACTION GUARANTEED OR YOUR MONEY BACK
- ✓ TOOLS, EQUIPMENT, BATTERIES, ACCESSORIES
- ✓ \$6 MILLION INVENTORY
- ✓ RETAIL — WHOLESALE

*CAL AUTO STORES SUPPLIES MANY RAFFLE ITEMS
EACH MONTH — SHOW YOUR APPRECIATION BY
BUYING ALL NON-"NO S" ITEMS AT THESE STORES:*

OPEN 7 DAYS & EVENINGS

- North Hollywood, 5740 Lankershim, (213) 984-2573/763-9153
- Sepulveda, 9441 Sepulveda, (213) 892-0791
- Canoga Park, 21407 Vanowen, (213) 347-1015
- Northridge, 8555 Reseda Blvd. (213) 885-8526
- Granada Hills, 17559 Chatsworth, (213) 363-9571
- North Hollywood, 6846 Lankershim Blvd. (213) 765-7731
- Van Nuys, 14939 Oxnard, (213) 786-5071/873-1716
- Panorama City, 14629 Parthenia, (213) 894-9171

WE'VE GOT YOUR PART!

The Valley 's

P.O. BOX 96 - RESEDA, CA 91335

