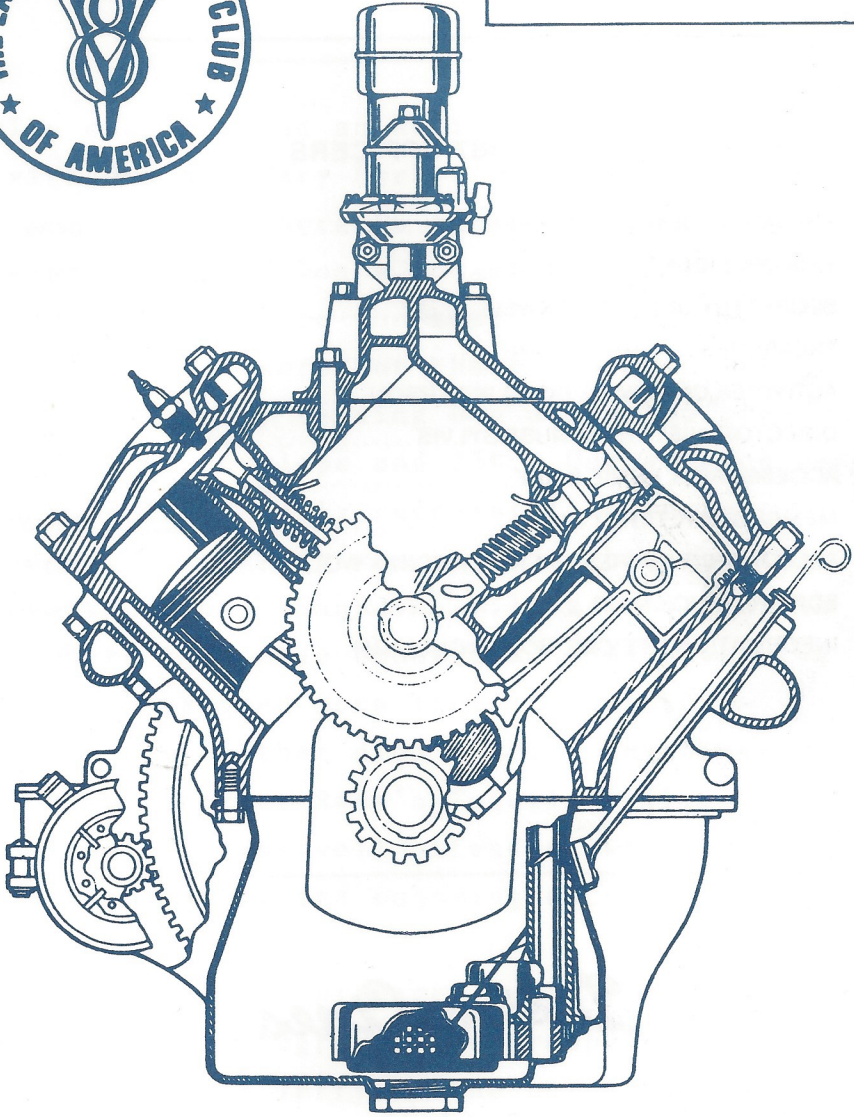




JUNE



*Drive Lines*

# The Valley 's

---

## 1987 OFFICERS

PRESIDENT, JOHN KEMMERER .....	843-2138
VICE PRESIDENT, PAT BERRY .....	848-5466
SECRETARY, JULIE BLACKWELL.....	(805) 499-1021
TREASURER, LARRY CAPLAN.....	363-2849
ACTIVITIES CHAIRMAN, DOUG PETERSON .....	703-0738
DIRECTOR, HISTORIAN, RUSS SYLVIS .....	(805) 527-4387
ACCESSORIES, ERNIE BAILY .....	(805) 522-9674
MEMBERSHIP, TERRY SMITH.....	989-3119
FELLOWSHIP, REFRESHMENTS, VIRGINIA WOLF .....	789-6201
EDITOR, CHUCK MAIR .....	785-9413
INFORMATION OFFICER, BOB McCULLAGH.....	886-2644

---

## *Drive Lines*

Published by

SAN FERNANDO VALLEY CHAPTER 40  
of the EARLY FORD V8 CLUB of AMERICA

P.O. Box 96  
RESEDA, CA. 91335

COVER/ROY JONES

## Valley V-8s

June 1987

---

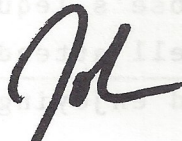
The club has had an active month starting with Don and Mary Durkee's Solvang tour. Included elsewhere in the Drive Lines is a copy of one of Don's infamous quizzes that was handed out on the tour. For those members that were not there, you can get the answers by sending Don a stamped pre-addressed envelope and 25¢. Our auction was not as financially successful as in past years, however it was an enjoyable evening thanks to Dave Sanborn, Bill Norton and the members that made donations. - As always, we could have used more items to auction - shame on you that didn't bring anything. Bob and Harriet Rose's Tequila Willies tour on the 17th was well attended, with 45 of us over eating and enjoying each others company.

Terry Smith has prepared a one page write-up of club background for prospective members. See Terry at the next meeting for a copy. Also, the National V-8 Club has sent us a handbook prepared for the regional clubs. The introduction from the handbook is reproduced following this article. In

future issues we will provide other excerpts from the handbook.

The June program will include the showing of a Henry Ford video tape compliments of the National and Pat Berry. At the meeting on June 7th we will also vote on whether or not to have an August meeting, since the Bend Oregon Western National starts the following Tuesday. - We need a volunteer to lead our June tour to La Palma Park in Anaheim, For the '40 Ford show. If we don't get a volunteer we will just meet at the park.

See you on the 7th.



Valley V-8's

Almost always  
the

First Sunday - Valley V-8's Monthly Meeting  
Of each month 7:00 p.m. Mercury Savings  
Call a club officer 5201 Laurel Canyon Blvd.  
if not sure! Studio City, CA

---

MEMORANDUM

TO: The Valley V'8 Club (Drive- Lines)  
FROM: Julie Blackwell A.K A Miss V'8  
DATE: May 19, 1987 The Last Day Before The Drive-Lines is Due And I'm Swamped!!!

Hey V'8 Fans-

Last month was our annual auction with Mr. Bill Norton. As tradition lives on Jack Miles and Bill fought the whole time. This was our fund raiser for the year and the club took in over \$400.00. Thanks Bill for your time.

Our Durkee tour to Solvang was great fun. Thanks to Don and Mary Durkee for all of their creative ideas and fun. Long live Solvang

Junes tour will be a trip to La Palma Park in Anaheim for 40 Ford day. Tour leaving from Balboa Park. More details later.

Tequilla Willies turned out 12 cars and some 43 people for this annual PIG OUT! Thank you to Bob Rose for his time to lead the group down to Manhattan Beach.

Our next meeting will be on June 7,1987 at Mercury Savings .

Well if my boss catches me writing about old Fords during investing time I'll be the secretary for the V'8s for the rest of my life.

Respectfully Submitted The "BE BOP QUEEN"

*Julie*

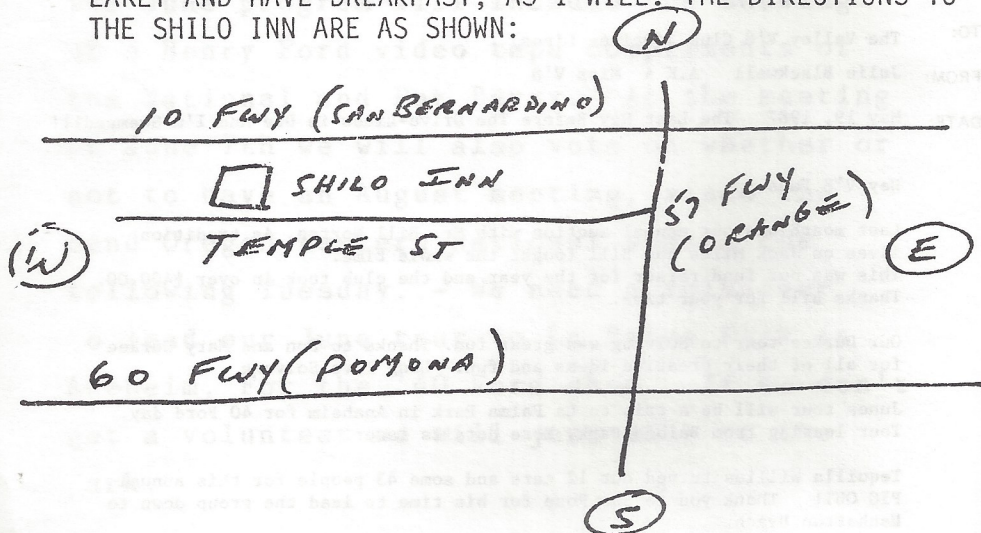


GAS TIP...from Jack Rohan

Don't buy gas when you see the tank truck loading the underground tanks at the filling station. Water and sediment collect at the bottom of these tanks. Gas delivery stirs it up.

# TOUR TO BEND . . . . .

\* THE TOUR WILL LEAVE ON THURSDAY, JULY 30TH, FROM THE SHILO INN, POMONA, AT 8:30 SHARP. THERE IS A NICE RESTAURANT FOR THOSE OF YOU WHO MAY WISH TO ARRIVE EARLY AND HAVE BREAKFAST, AS I WILL. THE DIRECTIONS TO THE SHILO INN ARE AS SHOWN:



TAKE THE 57 (ORANGE) FREEWAY TO TEMPLE ST. EXIT AND PROCEED WEST TO THE SHILO INN. WE WILL ASSEMBLE IN THE PARKING LOT IN FRONT OF THE RESTAURANT, WHICH IS ADJACENT TO THE INN. THE TOUR WILL THEN HEAD WEST ON THE SAN BERNARDINO FWY. SEE YOU ALL AT THE SHILO!!

JAY HARRIS

## IMPORTANT ANNOUNCEMENT

AS ANNOUNCED IN LAST MONTH'S FORDIST THE TOUR OF THE FILOLI MANSION SCHEDULED FOR SATURDAY, THE THIRD DAY OF OUR TOUR TO BEND, REQUIRES ADVANCE, PAID RESERVATIONS OF \$6.00 PER PERSON. IF YOU ARE JOINING US ON THE BEND TOUR, YOU MUST SEND ME \$6.00 FOR EACH PERSON IN YOUR PARTY SO THAT THE MONEY ARRIVES BY JUNE 15TH. SEND TO: JAY HARRIS

21831 MONTBURY DR.  
EL TORO, CA. 92630

I'M LOOKING FORWARD TO A GREAT TOUR!!!!!!

..... SEE YOU ON THE 30TH OF JULY.....

\* VALLEY V-& MEMBERS MEET TOUR AT HOLIDAY INN, NEWBURY PARK AT 10:30 A.M.

# Introduction

The Regional Group is the lifeblood of the Early Ford V8 Club of America. It is at this level the Early V8 Restorer has a "personal" contact with others sharing the same interest in Ford Motor Company vehicles built between 1932 and 1953.

Encouraging the preservation and restoration of these vehicles is our primary goal. However, providing a location and atmosphere to promote and encourage fellowship among these individuals is also important at both the National and local level.

The success of a regional group requires a lot of work from a majority of the membership. Normally, there will be a "hardcore" group of dedicated individuals who keep the regional group alive and active.

It is important to keep in mind that the Regional and National organization exists to aid in the enjoyment of this "hobby" of restoring, preserving and driving the Early V8 Fords. Members are encouraged to become involved in the Regional Group and National Club at whatever level of activity they can.

People are the key to any successful organization. It is vital to recruit new members and keep the old ones. Providing a friendly and informative variety of programs keeps the members interested and involved in the restoration of their Early V8.

Providing the opportunity to get these vehicles out of the garage and on the road is also a key element in an active and successful Regional Group.

The purpose of this handbook is to provide ideas and a blueprint for an active and energetic Regional Group. Many of these suggestions have been used by Regional Groups with excellent results.

The Early Ford V8 Club of America is YOUR organization. We are here to support and aid the Regional Group in any way possible to help make it a successful organization.

BOARD OF DIRECTORS  
Early Ford V8 Club of America

---

First Sunday - Valley V-8's Monthly Meeting  
Of each month 7:00 p.m. Mercury Savings  
5201 Laurel Canyon Blvd.  
Studio City, CA

---

## QUESTIONNAIRE

1. Name 5 past national V8 presidents? \_\_\_\_\_  
\_\_\_\_\_.
2. In the song wake up little Suzie by the Everly Bros, what time in the morning did they wake up? \_\_\_\_\_.
3. What year did Elvis Presley die? \_\_\_\_\_.
4. What year was the last year Henry Ford used the 21 stud 65 HP engine in a U.S. passenger car? \_\_\_\_\_.
5. What was the last year Ford used only 1 tail light on the standard model U.S. passenger, not woodies, \_\_\_\_\_.
6. What was Franklin D. Roosevelt's wife's name? \_\_\_\_\_.
7. How many kids did Henry Ford have? \_\_\_\_\_.
8. What kind of shoes did Elvis not want anyone to step on? \_\_\_\_\_.
9. Name the other singers that went down in the airplane crash with Buddy Holly? \_\_\_\_\_  
\_\_\_\_\_.
10. What city and state was Buddy Holly from? \_\_\_\_\_
11. Name the Presidents that served the U.S. between 1932 and 1953? \_\_\_\_\_  
\_\_\_\_\_.
12. When did Ford offer a 6 cyl. engine? \_\_\_\_\_.
13. What does L.S.M.F.T. mean? \_\_\_\_\_  
\_\_\_\_\_.
14. What year did Ford last use wire wheels? \_\_\_\_\_.
15. What year did Ford offer factory turn signals in the steering column, and what year did Mercury?  
\_\_\_\_\_ FORD: \_\_\_\_\_ MERCURY: \_\_\_\_\_
16. On the Lone Ranger show what was Tonto's horse's name? \_\_\_\_\_  
\_\_\_\_\_.
17. What was Dale Evans' horse's name? \_\_\_\_\_.
18. What year did Lincoln Zephyr come out? \_\_\_\_\_.
19. What year did Mercury come out? \_\_\_\_\_.
20. How many years between 1932 and 1948 did Ford not use a woodgrain dash on any models? \_\_\_\_\_.



21. When did the starter button first come on the dash ar.  
when did it leave the dash? \_\_\_\_\_.
22. Who was the Host of the Howdy Duty show? \_\_\_\_\_.
23. When did Pres. John F. Kennedy die? \_\_\_\_\_  
Month: \_\_\_\_\_ YEAR: \_\_\_\_\_
24. How many kids did Edsel Ford have? \_\_\_\_\_.
25. Name the Little guy from the Alka Seltzer commericals? \_\_\_\_\_.
26. What year was the last 6 cyl. flat head used in a U.S.  
Passenger car? \_\_\_\_\_.
27. How many times was Pres. Gerald Fords life in danger  
while in office by fire arms? Name the suspect or  
suspects. \_\_\_\_\_.
28. What did Mr. Haley in 1954 and Ford Motor Co. in 1960  
have in common? \_\_\_\_\_.
29. In 1932 who won the world Series? (Baseball) \_\_\_\_\_.
30. What was Elvis Preselys twin brothers name? \_\_\_\_\_.
31. What year or years did Ford offer the most engines?  
What model? \_\_\_\_\_.  
What Engines? \_\_\_\_\_.
32. Who were the other singers that died with Patsey Kline?  
\_\_\_\_\_.
33. In the TV Series, Daniel Boone, the star had an Indian  
buddy who became a very popular singer in the 60 'S,  
Who was he? \_\_\_\_\_.
34. What kind of car was James Dean killed in? \_\_\_\_\_  
MAKE: \_\_\_\_\_ YEAR: \_\_\_\_\_
35. What was Gene Autry's horse named? \_\_\_\_\_.
36. What are the Everly Bros. Names? \_\_\_\_\_.

Valley V-8's

FOR SALE:

LOTS OF 36 FORD PARTS FOR SALE.  
CALL HAROLD SELSON.

818-789-1044

# **DON'S** Auto Parts

MACHINE SHOP and BALANCING

Monday thru Friday 9 a.m. to 8 p.m.

Saturday 9 to 6 - Sunday 10 to 4

Domestic &  
Foreign  
Parts & Supplies



**894-6441**

10241 Woodley (At Devonshire), Sepulveda

---



NEW &  
RECONDITIONED

## **NO. HOLLYWOOD BATTERY**

HIGHEST QUALITY FOR MAXIMUM  
PERFORMANCE & LONG LIFE

Correct 6 Volt Sizes  
For Early V-8's

10748 Burbank Blvd.  
No. Hollywood, Ca. 91601  
(818) 766-5530

AUTO  
TRUCK  
MOTORCYCLE  
MARINE

---

## **CANOGA AUTO PARTS**

*Serving You Since 1955*

- DOMESTIC
- FOREIGN
- PAINT & BODY SHOP  
SUPPLIES

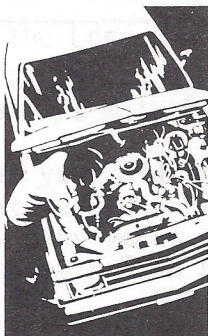
**RICHARD MATHIESEN**

Manager

**340-1536**

21422 SHERMAN WAY, CANOGA PARK, CA 91303

---



## **PRO-CARE AUTOMOTIVE SERVICE**

JERRY ALLEN

14700 LULL ST.  
VAN NUYS, CA 91405  
(818) 908-1413

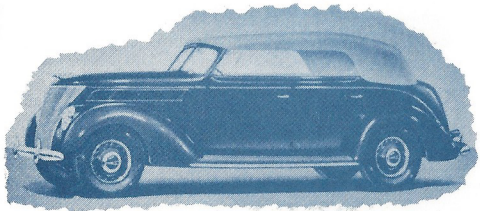
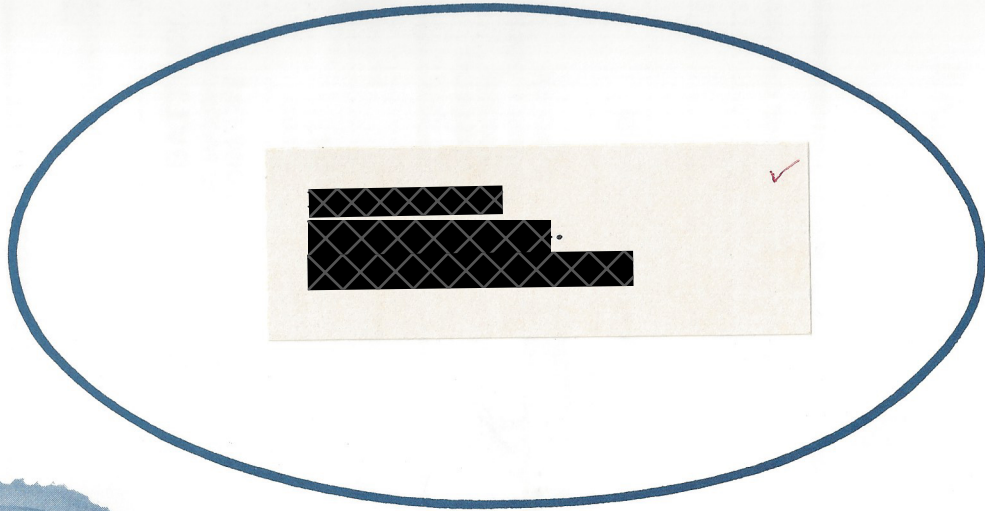
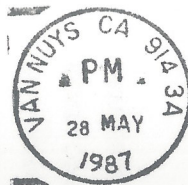
PROFESSIONAL REPAIRS & PREVENTATIVE MAINTENANCE, ON ALL  
MAKES OF CARS & TRUCKS

## PAST PRESIDENT

JIM ROWE.....	1971-72
DOUG PETERSON.....	1972-73
DON DURKEE.....	1974
ED WARNOCK.....	1975
JOHN BUSK.....	1976
CHIP WERSTEIN.....	1977
STAN MASRAJE.....	1978
BOB DRAKE.....	1979
BILL CULP.....	1979
AL SPENCER.....	1980
LARRY CAPLAN.....	1981
BOB ROSE.....	1982
DON DURKEE.....	1983
PAUL KIRK.....	1984
KENT LOWRY.....	1985
DAVE SANBORN.....	1986

**The Valley**  **'s**

**P.O. BOX 96 - RESEDA, CA 91335**



**50th Anniversary**