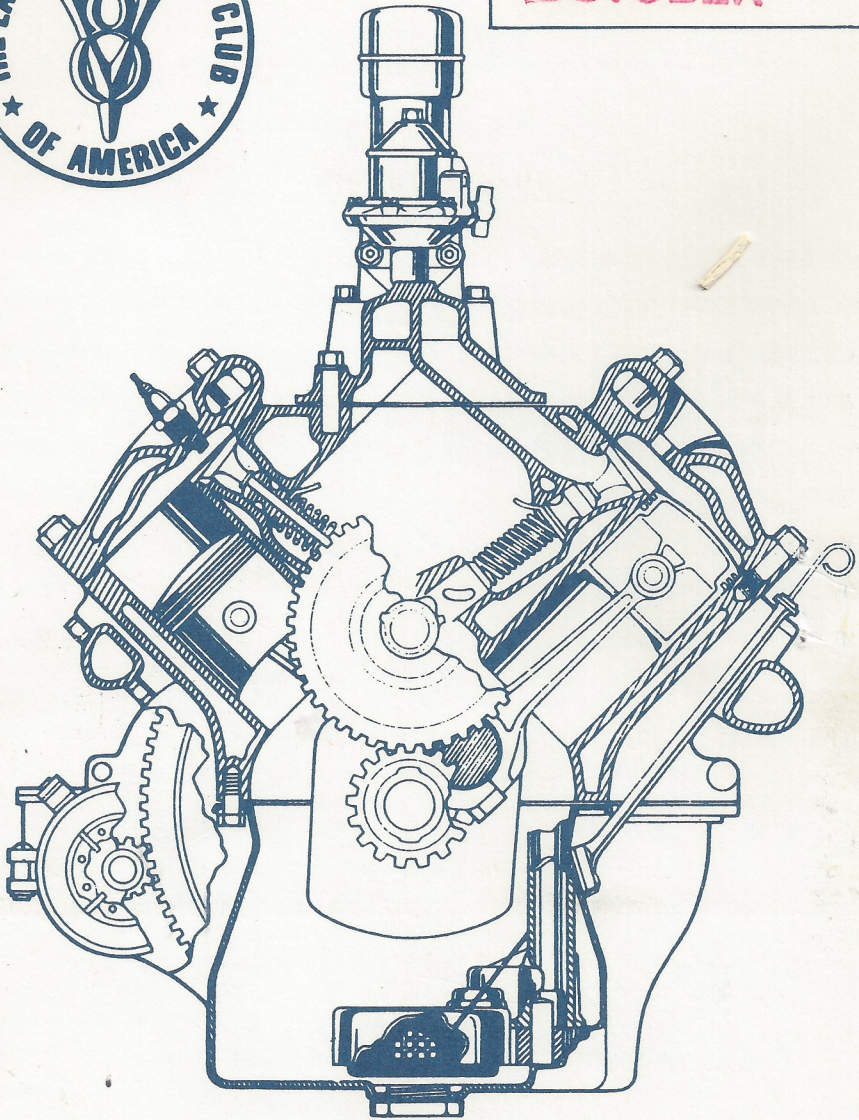


801



OCTOBER



Drive Lines

The Valley 's

1989 OFFICERS

PRESIDENT, JERRY JENSEN.....	886-5711
VICE PRESIDENT, RUSS SYLVIS	(805) 527-4387
SECRETARY, JULIE BLACKWELL.....	(805) 499-1021
TREASURER, DON DUPREE.....	894-7255
ACTIVITIES DIRECTOR, CHARLES SHUBB	882-2927
ACCESSORIES, JACK MILES.....	347-8617
MEMBERSHIP, TERRY SMITH.....	989-3119
FELLOWSHIP/REFRESHMENTS, VIRGINIA WOLF.....	789-6201
EDITOR, CHUCK MAIR	785-9413 / 786-5008

Drive Lines

Published by

SAN FERNANDO VALLEY CHAPTER 40
of the EARLY FORD V8 CLUB OF AMERICA

P.O. Box 96
Reseda, CA 91335

COVER/ROY JONES

THE VALLEY V-8's

October 1989

PRESIDENT'S MESSAGE

Summer has come and gone and my goal of finishing my 39 Tudor has not materialized. Not meeting a time table is not unusual in my 20 years of experience; but still disappointing none the less. If there is one thing to be learned from restoring cars, it is patience. If that lesson isn't learned, it is possible to cause physical ailments like ulcers, high blood pressure or at the very least gray hair!

This is the last month you have to toss your hat in the ring for a position as one of the club officers for 1990. Anyone interested please contact one of the current club officers. "Try it, you'll like it".

Chuck Shubb has arranged a tour to the Bothwell collection on October 15th. If you saw this collection several years ago, you wouldn't recognize it now. It is much improved and cleaned up. Plan on bringing a picnic lunch and enjoy good fellowship on the Bothwell ranch.

October is a prime time of the year for car shows. If you like to display your car or just view someone else's vehicles, four shows are listed in the Calendar of Events for the month of October.

The Southern California Regional Group has scheduled a tour on October 1st to the Antique Mall in Burbank. Dennis Keene invites members of the Valley V-8's to join them on this tour. Call Dennis at 213/665-1363 for more information. The So-Cal group will visit us at our meeting that evening.

If you are like most of us, somewhere along the line you have had a starter problem. At the October meeting Don Dupree is going to give a presentation on starters and problem solving. Don's programs are always enjoyable and informative, so be sure to make the October meeting. See you there!

Jerry

PS BILL CULP HAS HAD SURGERY. PLEASE SEND GET WELL cards. THANK YOU,



THE TOUR TO AIR SHOW
PHOTOS TAKEN BY PAT BERRY

CALENDAR OF EVENTS

- Oct. 1 Regular meeting at Mercury Savings,
Magnolia & Laurel Canyon, 7:30 P.M.
Tire kicking at 7:00
- Oct 1 Join the Southern California Reg.
Group tour to the Antique Mall in
Burbank. Dennis Keene 213/665-1363
- Oct. 5-7 AACA National Meet at Hershey
- Oct. 7 Verdugo Vintage Vehicles Annual Car
Show at K Mart in Sunland
818/352-1225
- Oct. 8 20th Annual All Ford Picnic at La
Palma Park in Anaheim
- Oct. 15 Valley V-8's tour to the Bothwell
Collection. Meet at Balboa Park,
Balboa & Burbank Blvd. parking lot
at 10:00 A.M. Bring a picnic lunch.
- Oct. 22 Encino Motor Society Concours Car
Show at Crespi High School in
Encino. 818/996-5217
- Oct. 29 Fourth Annual Westlake Village Auto
Show at the Plaza. 818/706-0411
- Nov. 5 Regular Meeting at Mercury Savings

>>>> **OCTOBER** <<<<<
>>>>>>>>>> **BIRTHDAYS** <<<<<<<<<<<

- October 3** - Dave Sanbornn
15 - Richard Mottern
October 20 - Isabel De Fatta

October 24 - Jan Hardin

October 24 - Leslie Littner

<<<< **Happy Birthday to All of you.** >>>>

Please let us know when your Birthday is !

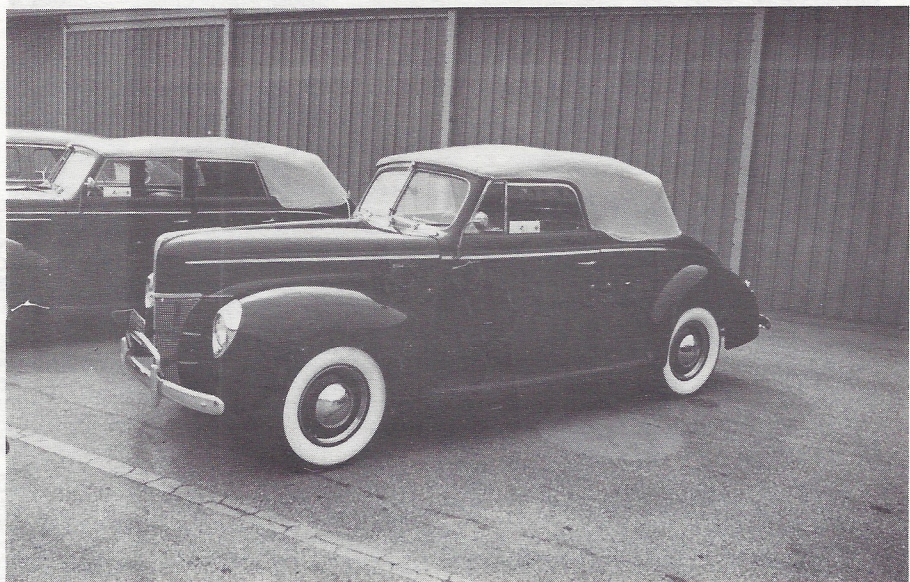
Your Name: _____

Your Birthday: _____

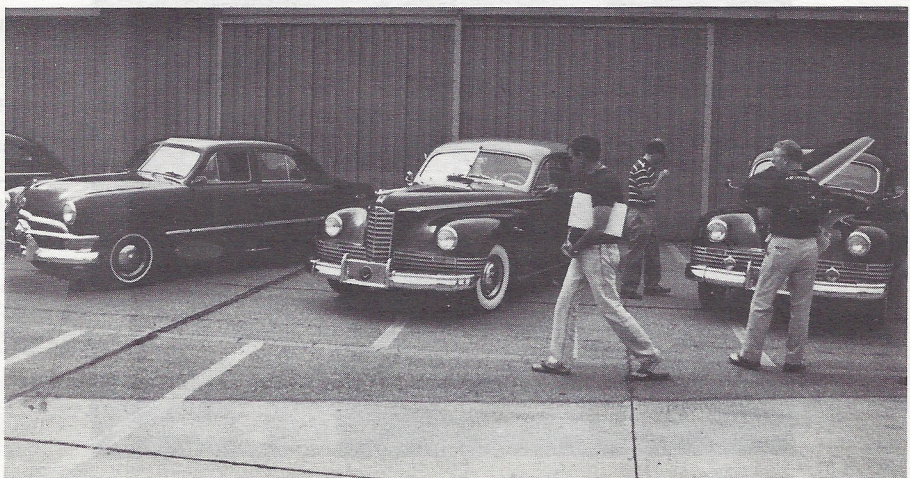
Spouse's Name: _____

Spouse's Birthday: _____

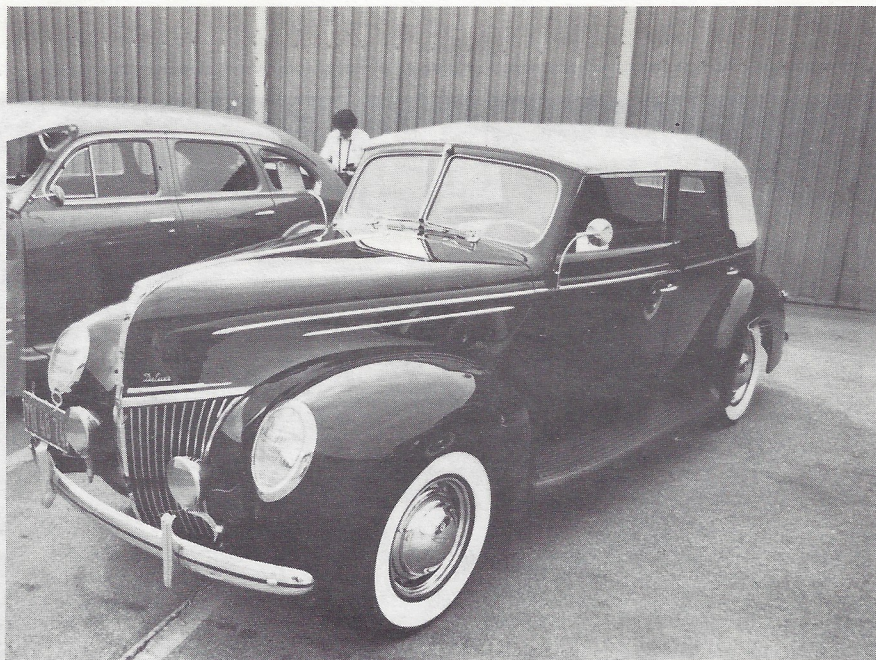
Fill out the above information and mail to:
Virginia Wolf
13024 Hartsook Street
Sherman Oaks, CA 91423



CHARLES SHUBBS CAR AT THE
HAWTHORN AIR SHOW TOUR



PAT'S EXPENSIVE CAR, NEXT TO TWO
CHEAP PACKARD'S AT AIR SHOW.



JERRY JENSENS CAR AT
HAWTHORN AIR SHOW



BOB ROSE - JOHN WOLF
BILL WOODS
KENT LOWRY

RESTORATION TIP
OVERHAULING YOUR 1937 - 1948 FORD STEERING BOX

WORM GEARS ON THE STEERING SHAFT ARE GETTING HARD TO FIND AND 90% OF THE TIME WHEN YOU OPEN UP A STEERING BOX YOU FIND THE WORM GEAR IS BREAKING UP ON THE SURFACE. FORD STILL SELLS WORM GEARS AND SHAFTS FOR 1941 - 1948 FORDS. YOU CAN PURCHASE ONE OF THESE AND PRESS THE NEW GEAR OFF THE NEW SHAFT AND PRESS BACK ON YOUR OLD SHAFT (IT IS BEST TO USE A PRESS THAT IS AUTOMATIC SO THE GEAR GOES ON IN ONE MOVE OTHERWISE THE SHAFT WILL FREEZE INTO THE WORM GEAR AND THE SHAFT WILL BEND IN HALF). THEY SELL FOR ABOUT \$20.00 AT THE FORD DEALERSHIP. THE SECTOR IS ALSO AVAILABLE. INSTEAD OF THE RUBBER BUSHING INSIDE THE MASS JACKET (REMOVE THESE AS THEY CREATE A LOT OF FRICTION AND DO NOT KEEP THE STEERING WHEEL CENTERED), FROM FORD YOU BUY C3DZ-3517A BEARING PLUS BIAZ-3518A STEERING COLUMN BEARING BUSHING PLUS C3DZ-3520A SPRING. YOU ASSEMBLE THESE PARTS UNDER THE STEERING WHEEL ON 32-48 FORDS.

40-48 FORDS, THE BEARINGS NEED TO BE GROUND OFF UNTIL STRAIGHT ON OUTSIDE OF RACE AND WILL START IN TUBE WITH FINGER PRESSURE. HONE TUBE WITH WHEEL CYLINDER HONE TILL SMOOTH. LUBE TUBE AND PRESS IN USING SOCKET, 1" TO 1-1/4" FROM TOP. IF BEARING IS TOO TIGHT TUBE WILL COLLAPSE. IF POSSIBLE, YOU SHOULD HAVE ME DO THIS FOR YOU. I STOCK THE PARTS AND IT TAKES ONLY A FEW MINUTES TO DO.

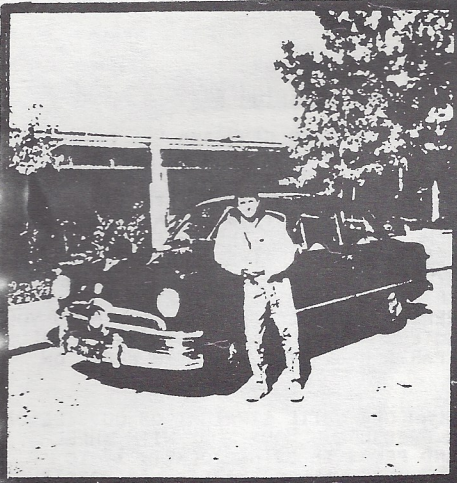
BELOW ARE LISTED THE PARTS FOR 37-48 FORD STEERING BOX:

<u>PART</u>	<u>PART NO.</u>	<u>YEAR FIT</u>
SECTOR	7RC3575	37 - 48
WORM & SHAFT	11A3524	41 - 48 (PRESS GEAR OFF & ON YOUR SHAFT)
RACE LOWER	8A-3553	37 - 56
RACE UPPER	B-3552	37 - 56
CAGE & ROLLERS	68-3571-A	32 - 56
SECTOR BUSHINGS	78-3576-AL	37 - 56
SEAL (VICTOR)	49319	35 - 56

YOU CAN MAKE A COVER GASKET AND ALSO YOU CAN BUY THE SHIMS FOR THE STEERING SHAFT BEARING ADJUSTMENT FROM FORD. SOMETIMES THE TUBE THAT THE HORN WIRE GOES THROUGH THAT IS WEDGED INTO THE BOTTOM PLATE IS CRACKED OR BROKEN AND THE GREASE WILL LEAK OUT IF NOT FIXED. BE SURE TO LOOK CLOSE. IF IT IS, THE PIECE CAN BE REMOVED FROM THE STEEL PLATE AND THE TUBE CAN BE SILVER SOLDERED BACK IN PLACE MAKING SURE THAT IT IS STRAIGHT. MAKE SURE THAT YOU PUT THE BOLTS BACK IN THE SAME PLACE THAT THEY CAME FROM. THE SHORTER ONES GO ON THE COVER BECAUSE THE LONG ONES WILL BOTTOM ON THE WORM GEAR.

IF YOU HAVE ANY QUESTIONS, CONTACT:
 PUGET SOUND — DICK FLYNN - 782-0249
(Washington State)

OLD BLUE



MY 1950 FORD

One day I went to get my Toyota washed. While waiting, I glanced at the car ad section of the Chronicle (Classis Antique Cars). I saw a 1950 Ford - mint - 1 owner - new tires - xtra parts - \$4,500. I called, but assumed it was sold. I was SHOCKED to find it was still FOR SALE.

My wife, Cheryle and I drove to the Sunset District of S.F. to see the car. I fell in love with it the moment the garage door was opened. The gentleman selling it was the executor of the estate. The original owner had passed on only a few months before. There was no 2nd thoughts, I bought it when I first saw it -- three days later it was legal.

Since then I have had a very interesting experience. I feel as if I am the caretaker of this man's car, he was so meticulous with it. I feel his presence at times and sense his approval whenever I administer to the needs of his car.

Lynn Bouchet bought this beautiful 1950 2 door custom delux sedan on May 19, 1950. I have, in addition to his car, the original Bill of Sale from S&C Motors in S.F. Along with every registration card as well as tags, until stickers were used. The original license plates are on the car. I have three log books detailing every event that has transpired with this car on a daily basis up until his death in December of '88. He kept track of miles per day, gas, oil changes, all services rendered, etc. I know how many miles were put on the

*Bill of Sale - Lynn Bouchet
1950 Ford - 1950
1950 Ford - 1950*

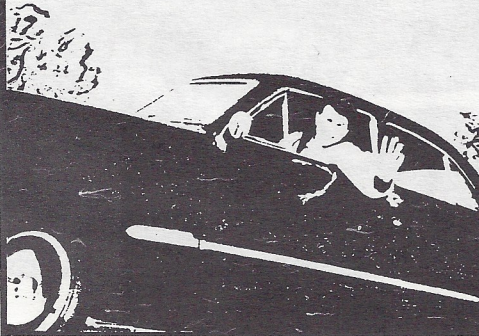
car each year. How many sets of tires, batteries, etc. I know the mileage periods between lube jobs and incidentally, he never missed a lube job every 1,000 miles or an oil change every 2,000. He did most of the services himself. I have begun to insert the same logs as he did, where he left and I started.

I respect Lynn Bouchet and recognize his love and attachment to "Old Blue", and I have made a commitment to care for it in his absence so he may rest in peace. Old Blue sits in the garage well protected when not on the road.

I am very careful where I park and how I drive. Old Blue is so clean with the original Sheridan Blue acrylic enamel paint still shining ever so bright and the interior without a single tear.

I love to sit in the front seat sometimes and quietly allow all my senses to come alive as I close my eyes and smell the old NOSTALGIC aroma of years gone by and listen as the original dashboard clock continues to tick-tock away -- just a bit slow, but still working.

It is a rare treat for me to have finally touched on a piece of the past which I treasure so much -- Old Blue has allowed this to happen.



John Papanicolos



TAKEN FROM GREYHOUND GAZETTE

Formerly
Chick Hart
Printers

DIFATIA

Graphics

Specializing in
Complete Quality Printing

OFFSET - 25" MAX - COMPLETE BINDERY SERVICE
TYPESETTING - GRAPHIC DESIGN - EMBOSsing
DIE CUTTING - FOIL STAMPING - CAMERA WORK

30 Years
Serving The Valley

5920 LEMONA AVENUE • VAN NUYS, CA 91411 • (818) 782-9883



ERNIE BAILY with his Red
PLYMOTH THE AIR SHOW

EST. 1979

THE END RESULT

Need carpenters, painters,
plumbers, electricians, etc.?

Call us, "THE END RESULT"

Our trades people are excellent, reliable
and reasonable. 818 784 1572



CLASSIFIED

Auto - Homeowners -
- ANTIQUE CARS -
ED HARDIN INSURANCE
Business - Life Health - Aircraft



Call us for your Insurance needs
(818) 368-5683

L. T. "LEE" SAWYER, INC.

Jobber

Shell Oil and Chemical Products

TOM SAWYER

14117 Aetna St. Box 369
Van Nuys, California 91408
Telephone (818) 786-8180 · 785 0902

NEW DONATER OF MONTHLY CASE OF MOTOR OIL
TO OUR CLUB. THANK YOU, TOM SAWYER..

AL SPENCER
Broker Consultant



Merrill Lynch Realty

Real Estate Division

13400 Ventura Blvd.
Sherman Oaks, California 91423

Bus. 818 788-5400
FAX 818 784-4926
Res. 818 761-1734



MAIR GLASS SERVICE

15140 Valerio Street
Van Nuys, California 91405
786-5008 • 785-9413

DON'S Auto Parts

MACHINE SHOP and BALANCING

Monday thru Friday 9 a.m. to 8 p.m.

Saturday 9 to 8 - Sunday 10 to 4

Domestic &
Foreign

Parts & Supplies



894-6441

10241 Woodley (Al Devonshire), Sepulveda



NEW &
RECONDITIONED

NO. HOLLYWOOD BATTERY
HIGHEST QUALITY FOR MAXIMUM
PERFORMANCE & LONG LIFE

Correct 6 Volt Sizes
For Early V-8's

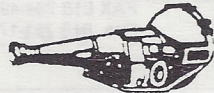
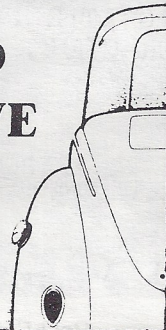
10748 Burbank Blvd.
No. Hollywood, Ca. 91601
(818) 766-5530

AUTO
TRUCK
MOTORCYCLE
MARINE

COUNTRY ROAD AUTOMOTIVE

CUSTOM FLATHEAD ENGINES
STOCK ·OR· STREET LETHAL

JACK MILES
(818) 347-8617



RUSS' TRANSMISSIONS

Transmission Specialists

DON'T CUSS * CALL RUSS

7760 Balboa Blvd.
Van Nuys, CA 91406

RUSS SYLVIS
(818) 901-9500

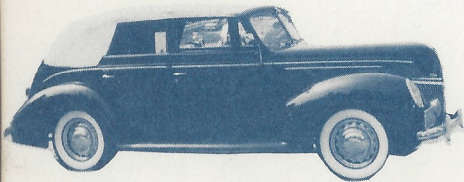
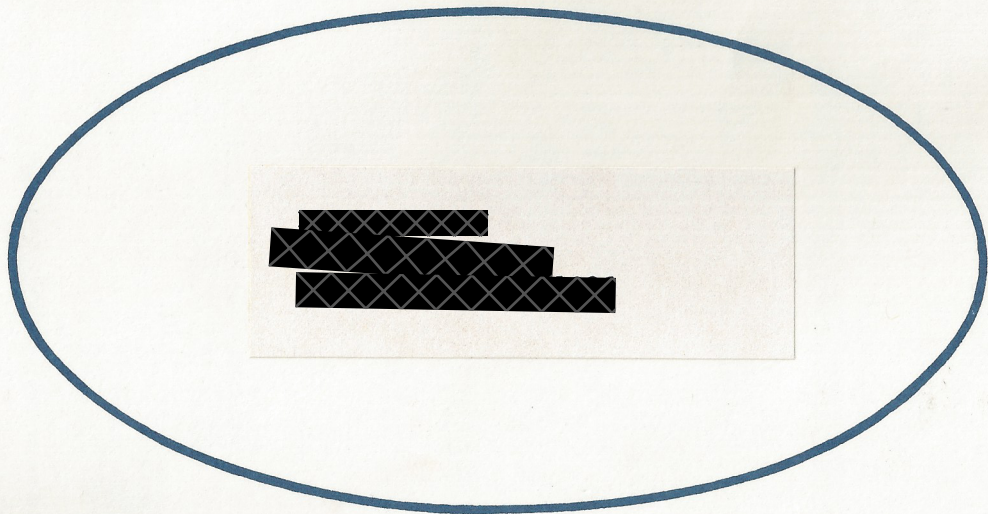
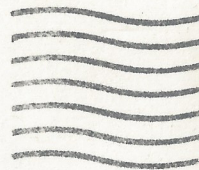
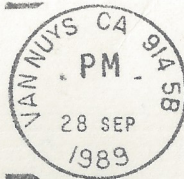
PAST PRESIDENTS

JIM ROWE	1971-72
DOUG PETERSON	1972-73
DON DURKEE	1974
ED WARNOCK	1975
JOHN BUSK	1976
CHIP WERSTEIN	1977
STAN MASRAJE	1978
BOB DRAKE	1979
BILL CULP	1979
AL SPENCER	1980
LARRY CAPLAN	1981
BOB ROSE	1982
DON DURKEE	1983
PAUL KIRK	1984
KENT LOWRY	1985
DAVE SANBORN	1986
JOHN KEMMERER	1987
DUDLEY OCHSNER	1988

MEETINGS: Mercury Savings and Loan
Magnolia and Laurel Canyon Blvds.
- 1st Sunday of Every Month -

The Valley  **'s**

P.O. BOX 96 - RESEDA, CA 91335



50th Anniversary

