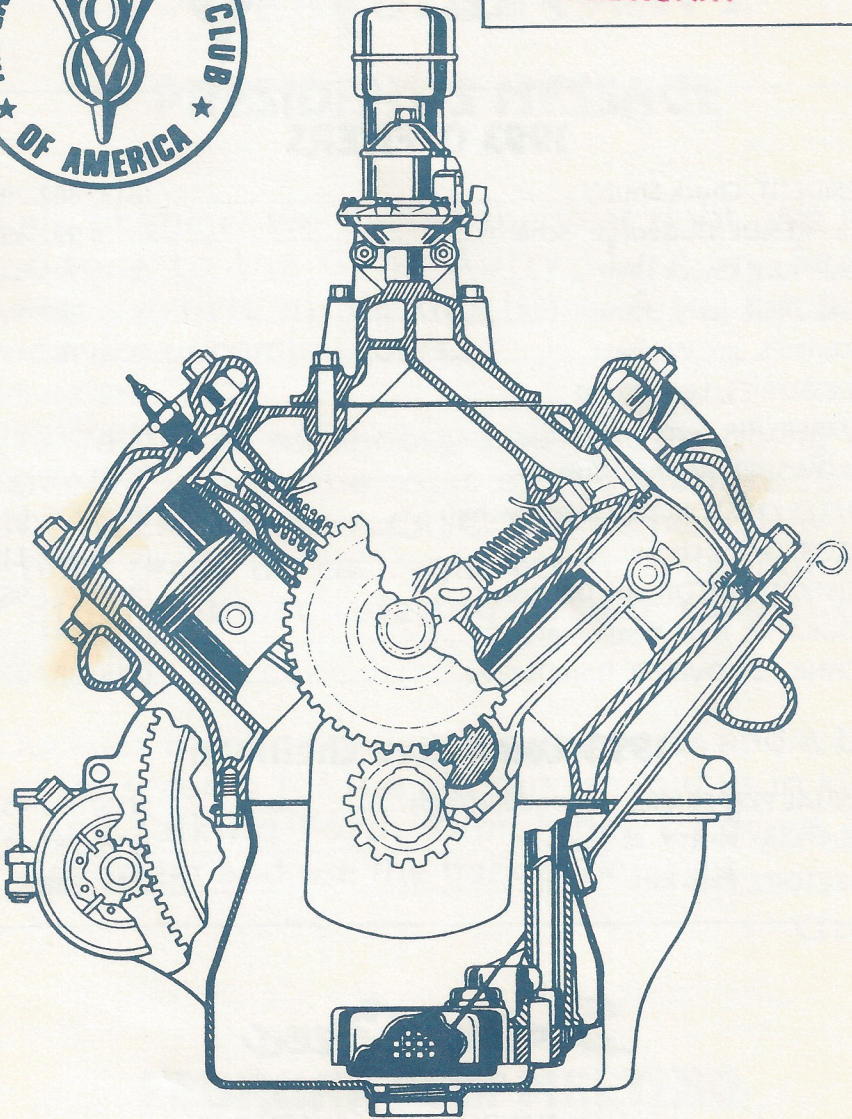




FEBRUARY



Drive Lines

The Valley 's

1993 OFFICERS

PRESIDENT, Chuck Shubb.....	(818) 882-2927
VICE PRESIDENT, George Richards.....	(818) 992-4537
SECRETARY, Chuck Mair.....	(818) 785-9413
TREASURER, Jerry Littner.....	(818) 347-1194
ACTIVITIES, Jim Winnett.....	(818) 768-4228
ACCESSORIES, Lee Wright.....	(818) 846-4906
MEMBERSHIP, Terry Smith.....	(818) 989-3119
FELLOWSHIP, Virginia Wolf.....	(818) 789-6201
RAFFLES / HISTORIAN, Lloyd Paschal.....	(805) 527-6464
EDITOR, Lesley Littner.....	(818) 347-1194
ASSISTANT EDITOR, Joe DiFatta.....	(818) 782-9883
PROGRAMS, John Kemmerer.....	(818) 843-2138
TECHNICAL ADVISOR, Don Dupree.....	(818) 883-2747

1993 Committee Chairmen

ANNUAL PEPPERMILL, George Richards.....	(818) 992-4537
CHRISTMAS PARTY, Al Spencer.....	(818) 761-1734
DIRECTORY, Paul Kirk.....	(818) 886-5467

Drive Lines

Published By

SAN FERNANDO VALLEY CHAPTER 40
of the EARLY FORD V8 CLUB OF AMERICA

P.O. Box 96
Reseda, CA 91335

COVER/ROY JONES

The Valley V8's

FEBRUARY 1993

PRESIDENT'S MESSAGE

Rain or shine, we started the year right. We had a great tour to the Gene Autry Museum. See Jim Winnett's article inside this issue. Also, mark your calendar for upcoming tours.

The future of our hobby and what is going on in Sacramento will be the topic of this month's speaker. FRANK WEEKS of the A.C.C.C. will be here. Have your questions ready on car registration, air pollution, or any other subject relating to our cars and the government.

Our new meeting hall meets our needs and is better suited for security for the old cars, so join us in kicking tires and talking Ford. Remember to drive in on Superior Street and use the back parking lot.

Chuck

FEBRUARY 7th MEETING

NEW MEETING PLACE . . .

**CONGREGATIONAL CHURCH
9659 Balboa Boulevard, Northridge**

TIRE KICKING - 7:00 P.M.

MEETING - 7:30 P.M.

UPCOMING EVENTS

Saturday, February 20, 1993 — DWP FILTRATION PLANT
13101 Sepulveda Boulevard, Sylmar — Free tours of the plant.

(Visitors must be at least 12 years of age.)

Tour will last approximately one hour and fifteen minutes

11:00 a.m. - meet at the Filtration Plant . . . or

10:30 a.m. - meet at the SW corner of Tampa & Rinaldi.

We will have lunch after the tour at a local restaurant!

DIRECTIONS TO THE FILTRATION PLANT

Northbound: Driving north on the Golden State Freeway (I-5), there are two Roxford Street exits. Take the second Roxford Street sign, turn right at Roxford Street and drive under the freeway underpass. At the corner, turn right onto Sepulveda Boulevard. The entrance to the plant will be the first approaching driveway on the left-hand side.

Southbound: Driving south on the Golden State Freeway (I-5), exit at Roxford Street. Turn right at Roxford Street and turn right at Sepulveda Boulevard. The entrance to the plant will be the first approaching driveway on the left-hand side.

FUTURE TOURS

Sunday, March 21 — WILDFLOWER TOUR & PICNIC
Details in next month's Drive Lines

Sunday, April 18 — TEQUILA WILLIE'S TOUR
Jim Winnett and Bob Rose are planning a fun-filled day!

Saturday, June 26 — MERLE NORMAN MUSEUM

Ventura V-8's are invited to join us!

10:00 a.m. Tour (Check-in by 9:45 a.m.)

Space is limited - 47 people maximum

No charge - No Kids Under 12 - Dress Code Required

"A great exhibit of autos, antiques and more - new displays!"

More details soon.

Here is a little blurb from . . .

AL & RUTH SPENCER RE: MEND

MEND is where most of the Christmas toys were taken. The California Children's Home Society called and said they had received plenty.

MEND means - Meet Each Need With Dignity. MEND was founded in 1971 by volunteers who saw desperate need in the Northeast San Fernando Valley. MEND is a non-profit center funded by foundations and individuals united in the belief that something can and must be done to help families in need become self-sufficient, productive members of society. MEND strives to achieve this goal through Direct Aid programs - i.e. emergency food, used clothing, gifts, furniture, and educational courses.

Christmas time brings MEND volunteers together in an effort to provide baskets of food and gifts for 1,200 families. On a daily basis, their food baskets reach some 45-75 families! All families served by MEND are pre-screened by MEND volunteers. MEND volunteers - the engine driving MEND programs - give over 2,500 hours per month.

Thank you all for your donations.

SAN FERNANDO VALLEY COMMUNITY MENTAL HEALTH CENTER, INC.

A Non-Profit Corporation

Administrative Offices: 6740 Kester Ave., Van Nuys, California 91405 (818) 901-4830 Fax (818) 785-3446

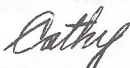
On behalf of the staff and clients at the Center, I would like to thank you and your fellow Valley V-8 members for the six toys*you donated.

The toys were distributed to two women in our Adult Day Treatment program to give as gifts for their children.

Most of our adult clients have very little, if any income, so you can imagine how thrilled our two clients were to be able to make the holidays special for their children.

Joe, thank you again for your continuous support and for taking the time to care for those in need. We wish you and yours a very happy, healthy and prosperous new year.

Sincerely,



Catherine Carson
Director of Public Relations

Chuck Mair's

SECRETARY'S VIEWPOINT

Written by Joe DiFatta with Jenny Littner's notes!!

A super group of Ford members were at our new meeting place . . . you can still go to a Ford meeting and attend church!

The new place is the Congregational Church - 9659 Balboa Blvd., in Northridge. Enter on Superior Street and park in the big, back parking lot. A great place!

Plaques were given to Joe DiFatta and Paul Kirk. Joe for the bulletin, and Paul for his typesetting and layout for our roster.

Motion was made by George Richards and passed that a prospective member attend two general meetings before becoming a Valley V-8 member. **It seems that members are joining and not attending . . . what a waste!**

After four names were called for the \$20.00 raffle, Ed Hardin won the \$20.00. The names called were: Bob Campbell, Paul Randall, Bill Carpenter, and Faitala Tauvaga.

Don Dupree is home recovering. He would enjoy a note or two. And, Don, if you need something, give us a call.

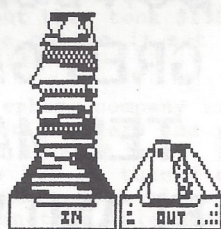
Accessories Chairman Lee Wright has lots of goodies for sale, including Coffee Mugs - \$3.50 each.

Program Chairman John Kemmerer introduced John Kattler from Action Auto Parts. John is a certified paint instructor. He spoke to us about the paints of today and what has to be done to create the "old-fashioned" Ford look. An informal discussion/answer session followed. We learned about "fish eyes", hardened paints, silicon, and OSHA laws governing paints and primer.

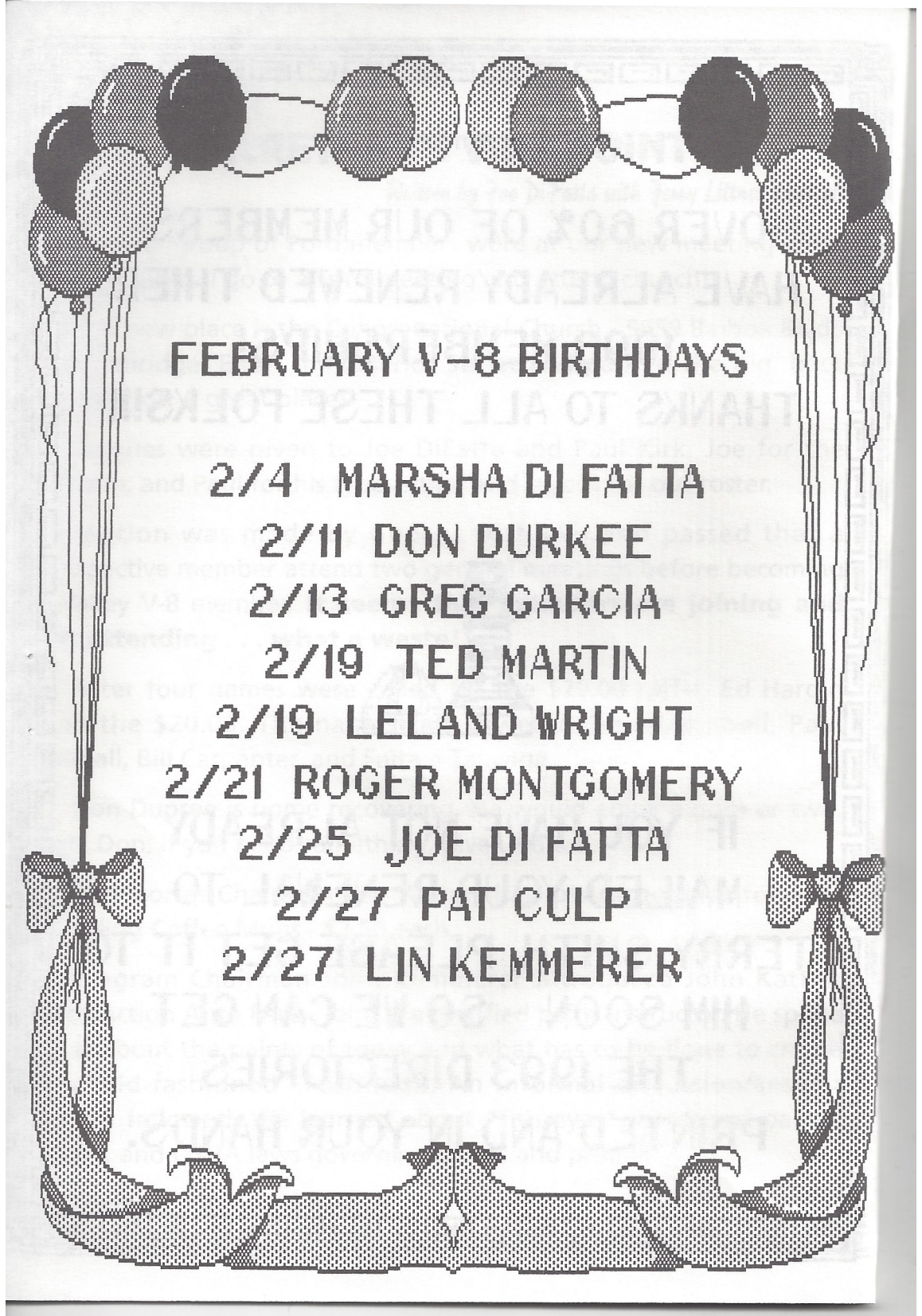
Meeting adjourned at 9:35.

LAST NOTICE!

**OVER 60% OF OUR MEMBERS
HAVE ALREADY RENEWED THIER
1993 MEMBERSHIPS!
THANKS TO ALL THESE FOLKS!!!**



**IF YOU HAVE NOT ALREADY
MAILED YOUR RENEWAL TO
TERRY SMITH, PLEASE GET IT TO
HIM SOON - SO WE CAN GET
THE 1993 DIRECTORIES
PRINTED AND IN YOUR HANDS.**



FEBRUARY 5-8 BIRTHDAYS

2/4 MARSHA DI FATTA

2/11 DON DURKEE

2/13 GREG GARCIA

2/19 TED MARTIN

2/19 LELAND WRIGHT

2/21 ROGER MONTGOMERY

2/25 JOE DI FATTA

2/27 PAT CULP

2/27 LIN KEMMERER

A PROFILE OF DON DUPREE

BY: BEV DUPREE

To give a short background on Don, his mother used to tell me how he was so fascinated with how things worked that, when he was very young he took a clock apart to see how it ticked. It wasn't long before he was taking clocks apart and putting them back together again, and they really worked! Next, it was record players and radios, and then cars. In 1934 he went with his Dad to the Ford agency to look at new cars and, there on the showroom floor was the car of his dreams - a 1934 Ford Cabriolet. Try as he did to persuade his Dad to buy it, they ended up with a practical family car - a Ford 4 door sedan, and a broken-hearted little boy.

Don bought his first car when he was 12 years old - a '26 Model T truck - for \$3.00. It had a few things missing - like tires and a radiator - but it didn't keep him and his friends from driving it around on the rims in his back yard - an acre in Van Nuys. Every so often they would stop at the hose to cool it down.

When other guys were playing baseball and football, Don could be found at the corner gas station watching the mechanics fix cars and even helping when they would let him. He had various old cars in high school and in 1948 he bought his 1916 "T Touring" which he still has. We were married in 1953 and in 1954 Don was driving down the street in Van Nuys and he couldn't believe his eyes. There sat a 1934 Ford Cabriolet on a car lot - just like the one he wanted his Dad to buy 20 years before. He probably would have traded me for the car, but they took \$135. We drove it for 2 or 3 years until the top gave out so it sat for a few years until we could afford to restore it.

Working for the telephone company in the Newhall area, he was always on the lookout for old cars and parts in farmers' fields. One day he spotted an old Model T truck. It was partly buried as it had sat for a long time but it turned out to be a 1921 Model T telephone installers truck. Most of it was there, but it looked pretty awful! He and another telephone employee bought it for \$12.50 each. Later the other partner decided he didn't want to restore it, so we bought his half by trading him a little wood stove we had paid \$5. for. After it was restored, the telephone company rented it from us many times for parades and special events.

We have added 3 more cars to the collection, but now when we go through areas with fields I have to put blinders on him for the fear he'll bring home more! We have truly enjoyed the cars over the years and the folks we have met through them. We both thank you all for the prayers and concern you have shown during Don's recent illness.

A MESSAGE FROM DON DUPREE

HI!...TO ALL MY V-8 FRIENDS. I'M AT HOME AND DEFINITELY ON THE MEND.

IF ANYONE IS INTERESTED, MY PROBLEM WASN'T A HEART ATTACK. IN DOCTORS TERMS, I HAD A "DISSECTION OF THE AORTA", AND IT BLEW OUT LIKE AN OLD TIRE. I NOW HAVE SOME KIND OF PLASTIC ACROSS ONE OF THE BAD PLACES, AND WITH THE HELP OF MY WIFE (NURSE), EVERYTHING WILL HEAL.

MOST IMPORTANT TO ME IS THE INTEREST YOU FRIENDS SHOWED. YOU WERE AN INSPIRATION TO HELP MAKE IT WORTH IT TO MAKE IT BACK.

THANK YOU EVERYONE.

DON DUPREE

THE FIRST EVENT OF 1993 - GENE AUTRY WESTERN HERITAGE MUSEUM

What a surprise turn-out for the Gene Autry Museum.

Lloyd, Donna and Kilaine Paschal braved the rain in their 1953 Club Coupe. They had three other family members in the Coupe, too. The ONLY Early V-8.

Prez. Chuck did arrive in a '65-'66 Mustang with Jerry Littne riding shotgun.

We all caravanned from Woodley Park in the drizzling rain, which changed to a downpour when we were in the museum.

We were met by the Oldsmobile Club, the Verdugo Vintage Vehicle (C.H.V.A.) and the Burbank "Road Kings". That made for a LARGE group to tour the museum.

For those of you who have not been to the Gene Autry Museum, it is a great museum to take visiting relatives and friends. On a clear day you could take in the Zoo, too!

There were monitor screens throughout the museum, where you could watch and learn about the western movies and western characters such as William Cody, a.k.a. Buffalo Bill, Gene Autry and many others.

There was an opportunity for guests to sit on a saddle, in front of a blue background, and have your image projected in a western adventure medley. Kids of ALL ages enjoyed this. There was one V-8er who was seen riding with the Lone Ranger and Tonto!!

There were two magnificently carved chairs from Scotland dating 1842, made to look like buffalo. They didn't look comfortable to sit in, but what craftsmanship!

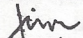
We saw a VELOCIPEDES...and we were lucky we didn't get any on. Actually, the velocipedes is a three-wheeled railroad handcar.

Those people with children along had a great excuse to go into Hands On Museum for Children. Children can dress up in western attire, spurs and all, and play with some toys of an era past.

Lunch was supposed to be at Fenderbenders in Glendale, but a downpour was in progress when we were exiting the museum. So a change of plans was enacted. We had lunch at the museum cafeteria-style "Golden Spur" restaurant.

See you at the February meeting and/or the DWP Filtration Plant our February 20th event!!!

With kindest regards, I am


Jim Winnett

GOT OUR KICKS ON ROUTE 66 TOUR

by Chuck Mair

WE GOT OUR KICKS ON THE ROUTE 66 TOUR TO LAUGHLIN, NEVADA WITH THE SOUTHERN CALIFORNIA REGIONAL GROUP ON JANUARY 8TH, 9TH, AND 10TH.

Darn, didn't take the '41 Ford to Coer 'd Alene last August because of the 100° plus heat - now, didn't take it to Nevada on account of the rain. So, we took a modern Ford product. Polly and I left a day early to spend the night in a motel so we could be ready to go first thing for the tour.

We arrived in Upland in a very heavy rain storm (tow trucks were having a field day) on Thursday p.m.

After spending the night in the motel with the smoke alarms going off twice and not knowing when they would go off again, we were still 15 minutes late just getting across the street in the morning at our starting place.

We left at 9:00 a.m. — five old cars and ten moderns.

We passed the Sycamore Inn (once the Stage Coach stop for the area), Rancho Cucamonga (home of the Virginia Dare Winery - one of California's oldest), heading East into the San Bernardino area. We noticed all the small defunct service stations and local (no-tell) motels, and orange juice stands (shaped just like an orange). We passed the Wig Wam Village and reached the summit of 4,260 feet. then, down to Victorville to pick up two '37 Fords to join us on our tour. On to Barstow, where the old train station is now converted into a McDonald's. Daggett was next. - Newberry Springs, where the movie "Bagdad Cafe" was filmed. Fifteen miles down the road is Pisgah Volcano. We drove through Ludlow, Siberia, Darby, Essex, and then into Laughlin.

Our time was our own in Laughlin until Saturday evening at the Tour Banquet. Route 66 signs were given to awardees. Lapel 66 signs and stickers were given to all the drivers.

Sharon and Lee Foster, our tour guides, were fantastic. It makes you glad we all belong to a great club.

P.S. It didn't rain Friday or Saturday, but it did sprinkle on some of the way home on Sunday. You all should have been there.

Chuck Mair

FOR SALE

SET OF 4 CHROMED REVERSE WHEELS. 4 1/2 x 5 x 14 with matching moon caps. \$50 - Lloyd Paschal 805-527-6464.

1966 MUSTANG CONVERTIBLE. 33,000 miles. \$11,500. Chuck Shubb 818-882-2927.

1954 FORD SKYLINER. Fresh motor, straight. \$3,200. Chuck Shubb 818-882-2927.

HOMEMADE SAILBOAT & HOMEMADE BOAT TRAILER (1933-34 Chevy Front Axle) First \$500 o.b.o. takes both. Also, 1968 CADILLAC CONVERTIBLE - \$10,500; 1960 CADILLAC 4-door h.t. \$5,800; 1956 PACKARD PATRIKIAN and 1957 PACKARD 200 DELUXE SEDAN - \$10,500 each o.b.o.; 1955 PONTIAC 4-door - \$2,850 o.b.o. Will take enclosed car trailer in part trade. Bill Toensing 818-578-1699 or Bob Monnick 818-368-1941.

1971 CHEVY MALIBU. 3500 V-8, 2-door - 48,000 original miles. One owner - p/s, p/b, at/ac. Richard Valleroy 310-828-7276.

TWO 1938 FORD SEDAN CONVERTIBLES. Don Dupree 818-883-2747.

1973 CHEVY NOVA. 4-door, a/c, 350 V-8, 52,000 miles. A clean "little old lady" car. \$1,400 o.b.o. Joan Rogers 818-355-1129.

1954 FORD CONVERTIBLE. Black with red & white interior, frame off restoration, electric seats, power steering, auto trans., power brakes, cont. kit, all new everything, better than #1/21,500. Allan Franklin 818-842-2230.

1934 Fordor - \$15,000. (818) 360-2707.

FEBRUARY TRIVIA QUIZ

1. Where were the heater controls of the 1950 Ford located?
2. Give the name of the imitation continental kit offered by Ford in 1953:
3. Ford came out with a sporty sedan in 1950. What was it called?
4. What was the 1st year Ford offered an automatic transmission?
5. What is the difference between the gas filler cap on the 1949 Ford and the 1950?
6. You are looking at the speedometer quadrant of a 1951 Ford Custom. How can you tell it is a custom rather than a Deluxe?
7. What was the 1st year Ford offered an overhead valve six?
8. What was the 1st year Ford offered an overhead valve V-8 in their passenger cars?

Answers on next page . . . NO PEEKING!



JACKPOT

\$20.00
Could Be Yours!

(You just have to be present and wear your name badge to win.)

TRIVIA ANSWERS:

1. In an illuminated housing under the dash and to the right of the steering column.
2. Coronado Deck.
3. Crestlinear.
4. Fordomatic in 1951.
5. It is exposed on the '49 and under a gas flap in 1950.
6. The speedometer needle on the 1951 Ford Custom has a circle on its tip which encircles the numerals. This circle lights up at night. The Deluxe model merely had a pointer.
7. 1952.
8. 1954.



IT'S THE LAW! DID YOU KNOW?

**NEW CALIFORNIA STATE LAW
ALLOWS CHP'S TO STOP YOU FOR
NOT WEARING SEATBELTS.**

BUT...



**THE LAW APPLIES ONLY TO CARS
MANUFACTURED AFTER 1968
WHEN SEAT BELTS WERE
INSTALLED AS STANDARD
EQUIPMENT.**

Prospective buyers queued up for 1946 Ford sedan

By Tad Burness

Americans took good care of their cars during World War II, when new civilian car production was curtailed.

Nearly everyone had to make do with used cars.

The oldest cars commonly seen in the 1940s were 1929 models. However, the majority of cars seen were 1936 to 1942. A few strange old pre-1929 marques did survive the wartime scrap drives, if their owners were sentimental about keeping them.

Ford and Hudson were two of the first to reconvert to civilian production, in July 1945. However, the war did not officially end until early September, and new '46 models were very hard to get. Prospective buyers had to queue up on waiting lists.

"There's a Ford in Your Future" was a well-publicized sales slogan in '45-'46 and for a few years afterward.

After the war, Ford offered sixes and V8s in DeLuxe and Super DeLuxe models, with a variety of body types: Coupes, club coupes, two-door (Tudor) sedans, four-door (Fordor) sedans, wood-bodied

station wagons, wood-bodied "Sportsman" convertibles, and steel-bodied convertibles.

The illustrated Tudor sedan was a popular model with families, as children could not fall out of the car from the back seat. (During the 1940s, in the days before seat belts, small children frequently fell out of moving automobiles.) Ford, in 1946, retained its old-fashioned transverse (cross-wise) leaf springs, one set at front and one at rear. But thinner leaves (and more of them) were now used, for a smoother ride.

New 1946 brakes were larger and required less pedal pressure. New "Silvaloy" bearings were advertised to last "up to three times longer." Ford interiors boasted "colorful new fabrics, rich plastics, simulated leather trim." One of the earliest postwar Ford ads I have found is a two-page color spread from Life magazine of October 8, 1945, which assured readers, "Today, these cars are rolling off the production lines in limited numbers.

Next month and the month after there'll be more new Ford cars available... and still more in 1946. So hold to your plan—don't settle for less. There is a Ford in your future."

1946 FORD SUPER DELUXE TUDOR SEDAN
BACK IN POSTWAR PRODUCTION AS EARLY AS JULY, 1945!
L-HEAD 239.4 CID 100 HP V8
3 3/16" X 3 3/4" BORE + STROKE
6-40
COMPRESSION RATIO
\$1179. fob FACTORY
8/30
TAD
6.00 x 16" TIRES
FORD 6 ALSO AVAIL. 3190 lbs. 114" W.B.

"THERE'S A Ford IN YOUR FUTURE!" (SALES SLOGAN)

©1992 by North America Syndicate, Inc. World rights reserved.

SUPPORT OUR ADVERTISERS!

DiFATIA
Graphics

Specializing in
Complete Quality Printing

5920 LEMONA AVENUE • VAN NUYS, CA 91411
(818) 782-9883

Flips
TIRE CENTER

FLIP SMITH

Formerly
GLOBE TIRE

7735 Sepulveda Blvd.
Van Nuys, CA 91405
(818) 786-8686

DON'S
Auto Parts

MACHINE SHOP and BALANCING

Monday thru Friday 8 a.m. to 7 p.m.
Saturday 9 to 6 - Sunday 10 to 4

10241 Woodley (At Devonshire)

Domestic &
Foreign
Parts & Supplies



(818)
894-6441

Sepulveda, CA 91343

RAFFLE PRIZE DONOR

DAVID'S
VENDING
SALES AND SERVICE

DISTRIBUTOR FOR:

Cavalier
WITTENBERG

LETTRO-VEED
BREWOMATIC
HAMILTON

coinco • Amoro
800 S. San Fernando Blvd.
Burbank, California 91502

(818) 848-8703
DAVID SATEL

ST. LICENSE #462714



ARNIE LIEBOWITZ
TOTAL GLASS WORKS
(818) 780-4000

★ CUSTOM MIRRORS
★ SHOWERS & STEAM ENCLOSURES
★ COMMERCIAL STOREFRONTS
★ SOLARIUMS
★ TEMPERED GLASS
★ WINDOWS SCREENS & SCREEN DOORS
14647 ARMINTA ST. - PANORAMA CITY, CA

R.C. Smith's
Roofing Solutions

Roofing & Waterproofing • Complete Maintenance Service

8707-D Lindley Ave., Ste. 199, Northridge, CA 91325
Lic. #356650 (818) 718-2313

Auto • Homeowners

- ANTIQUE CARS -

ED HARDIN INSURANCE

Business • Life • Health • Aircraft



Call us for your Insurance needs!

(818) 363-7864

Antique Car Radio
Repairs & Restoration

Over 50 Years
Experience

NORB FOURNIER

Van Nuys Antique Radio

13133 Weddington St.
Van Nuys, Ca. 91401

(818) 784-5836

SUPPORT OUR ADVERTISERS!

L.T. "LEE" SAWYER, INC.

Jobber

Shell Oil and Chemical Products

14117 Aetna Street, Box 369
Van Nuys, California 91408

TOM SAWYER (818) 786-8180 / (818) 785-0902

RAFFLE PRIZE DONOR

The Prudential



California Realty

13400 Ventura Blvd.
Sherman Oaks, California 91423

Bus. (818) 788-5400

Res. (818) 761-1734

Fax. (818) 784-4926

AL SPENCER
Broker Consultant



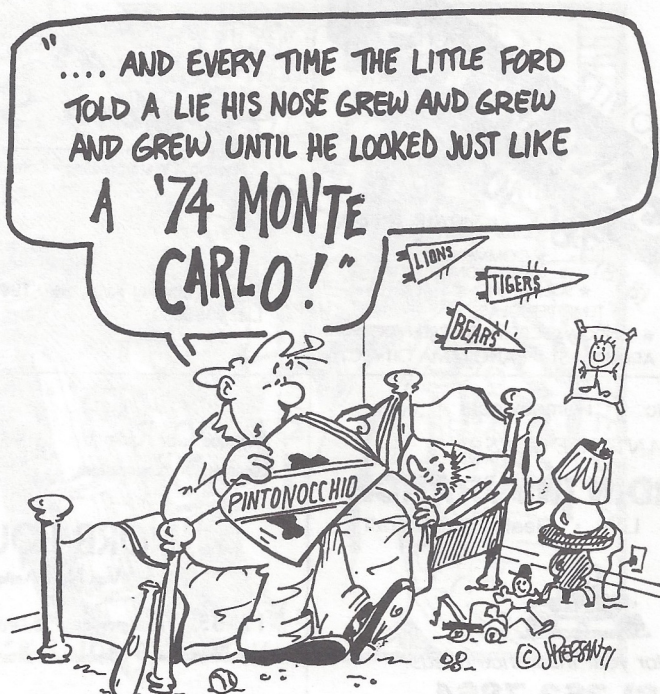
Residential • Commercial

KELLY ELECTRIC

ELECTRICAL CONSTRUCTION • MAINTENENCE

DAVE KELLY
ST. LIC # 657087

(818) 773-8997
(805) 255-6905



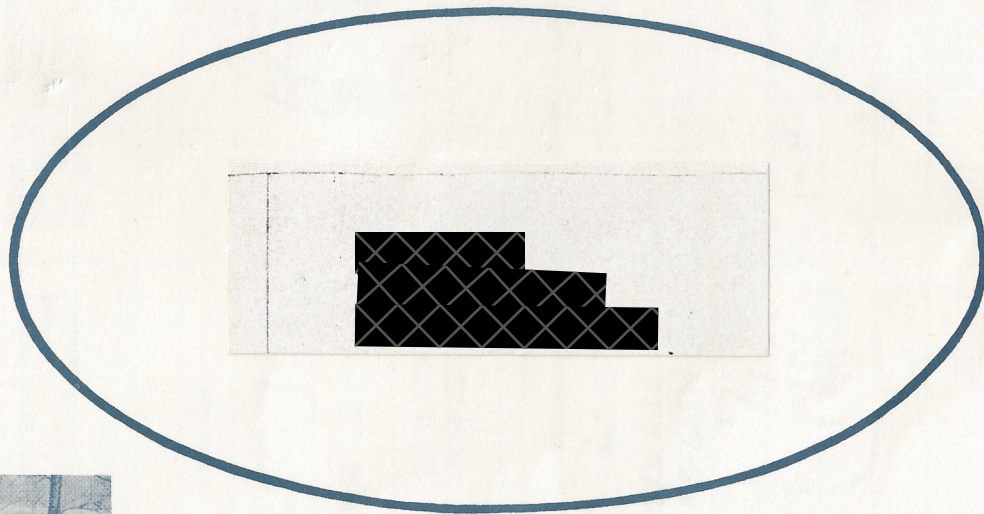
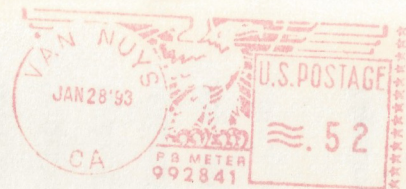
PAST PRESIDENTS

JIM ROWE.....	1971
DOUG PETERSON	1972
DON DURKEE	1974
ED WARNOCK	1975
JOHN BUSK.....	1976
CHIP WERSTEIN	1977
STAN MARSRAJE	1978
BOB DRAKE	1979
BILL CULP.....	1979
AL SPENCER.....	1980
LARRY CAPLAN	1981
BOB ROSE	1982
DON DURKEE	1983
PAUL KIRK	1984
KENT LOWRY	1985
DAVE SANBORN.....	1986
JOHN KEMMERER	1987
DUDLEY OCHSNER.....	1988
JERRY JENSEN	1989
JERRY JENSEN	1990
JOE DiFATTA.....	1991
CHUCK SHUBB.....	1992

Meetings are held on the first Sunday of every month at 7:00 p.m.

The Valley  **'s**

P.O. BOX 96 — RESEDA, CA 91335



1943 Ford Jeep