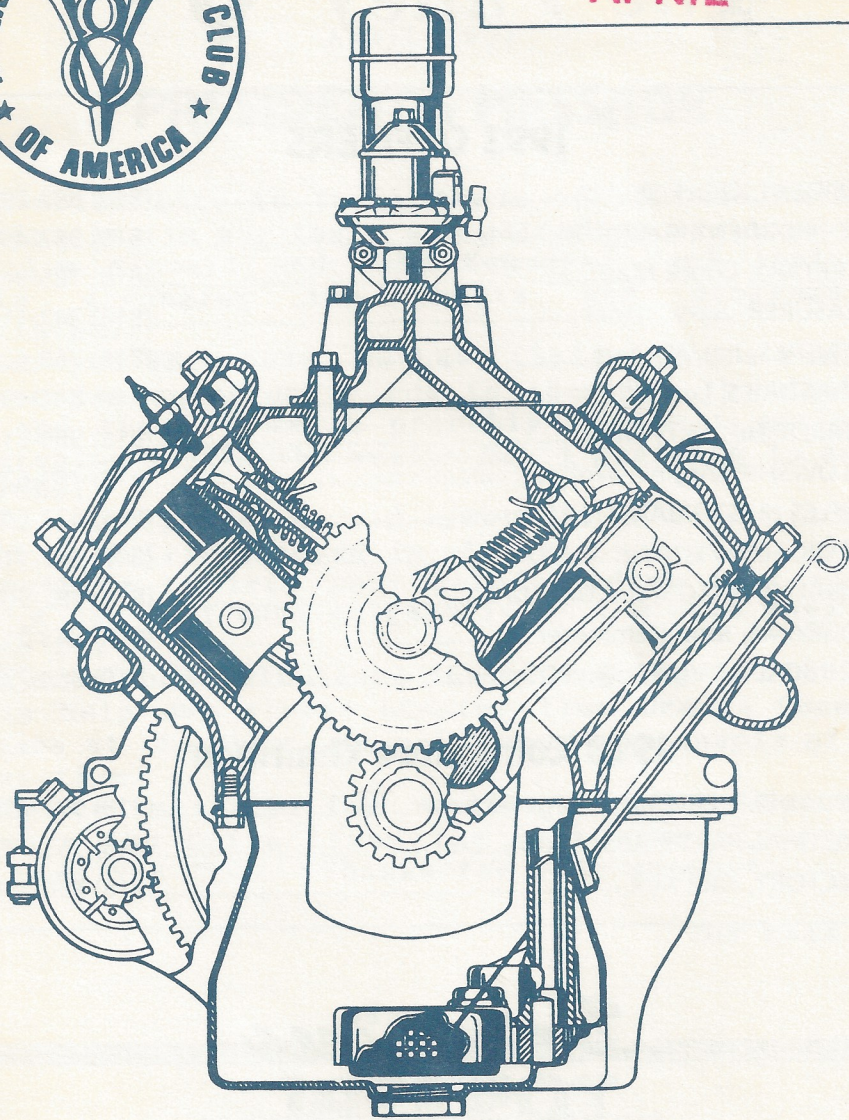




APRIL



Drive Lines

The Valley 's

1993 OFFICERS

PRESIDENT, Chuck Shubb.....	(818) 882-2927
VICE PRESIDENT, George Richards.....	(818) 992-4537
SECRETARY, Chuck Mair.....	(818) 785-9413
TREASURER, Jerry Littner.....	(818) 347-1194
ACTIVITIES, Jim Winnett.....	(818) 768-4228
ACCESSORIES, Lee Wright.....	(818) 846-4906
MEMBERSHIP, Terry Smith.....	(818) 989-3119
FELLOWSHIP, Virginia Wolf.....	(818) 789-6201
RAFFLES / HISTORIAN, Lloyd Paschal.....	(805) 527-6464
EDITOR, Lesley Littner.....	(818) 347-1194
ASSISTANT EDITOR, Joe DiFatta.....	(818) 782-9883
PROGRAMS, John Kemmerer.....	(818) 843-2138
TECHNICAL ADVISOR, Don Dupree.....	(818) 883-2747

1993 Committee Chairmen

ANNUAL PEPPERMILL, George Richards.....	(818) 992-4537
CHRISTMAS PARTY, Al Spencer.....	(818) 761-1734
DIRECTORY, Paul Kirk.....	(818) 886-5467

Drive Lines

Published By

SAN FERNANDO VALLEY CHAPTER 40
of the EARLY FORD V8 CLUB OF AMERICA

P.O. Box 96
Reseda, CA 91335

COVER/ROY JONES

The Valley V8's

APRIL 1993

PRESIDENT'S MESSAGE

I would like to thank those of you who have been participating in our tours and attending meetings. This makes Jim Winnett and John Kemmerer feel that their efforts arranging the events and programs are appreciated.

For you TECH NUTS, we have Chris Conners coming to speak on transmissions - how to identify the different years and types. He is probably the best early Ford transmission guy in the west. Don't hesitate to ask him questions.

In a few years our old cars will be art objects and we will be driving around in electric vehicles. It will be something to tell your grandchildren that you had driven a car that runs on gasoline. I'm sure they won't believe it.

I need some volunteers that are going to the Knotts show to help our sister chapter from Orange County to park cars at the show. It will require a couple of hours of your time.

We need articles for our DRIVE LINES. Let us all help make the Drive Lines the best newsletter in the Early Ford V-8 Club. Thanks for your support.

THE PREZ

JACKPOT



\$20.00

Could Be Yours!

(You just have to be present and wear your name badge to win.)

23 OLD CARS WERE DRIVEN TO THE
MARCH 7TH MEETING.

16 OF THEM WERE FORDS!

APRIL 4TH MEETING

WHERE: CONGREGATIONAL CHURCH

9659 BALBOA BOULEVARD

NORTHRIDGE

TIRE KICKING - 7:00 P.M.

MEETING - 7:30 P.M.

Joe - Please remind the members that our speaker for April 4th will be Chris Connors. (Jack Miles says he is preeminent when it comes to transmissions). Chris will be talking about transmissions from '32 to '48 — What's the same, what's different, what goes wrong and why.

Lin and I will be in Charleston, so will not be at the meeting. I'll arrange to have someone else greet Chris. — Would appreciate it if you would also make him feel welcome — He'll be driving a '52 panel delivery.

By the way, the President says he's tired of hearing people ask "*What's up Chuck?*" So, will you remind everyone that the auction is in May. We already have Don Durkee lined up and John Wolf is working on Bill Norton. But we do need good parts to auction off. Also, the June meeting will be a Bar-B-Q, or some kind of picnic at Don Dupree's... And then there's that special function at Marsha & Joe's later this summer.

Chow! See you in a couple of weeks.


John Kemmerer

UPCOMING EVENTS

TEQUILA WILLIE'S BRUNCH TOUR

SUNDAY, APRIL 18, 1993

JIM WINNETT AND BOB ROSE ARE PLANNING
A FUN FILLED DAY!

LEAVE WOODLEY PARK AT 10 A.M.

WE WILL CARAVAN TO:

ADULTS: \$16.



KIDS UNDER 12: \$8.

TEQUILA WILLIE'S

3290 SEPULVEDA BLVD., MANHATTAN BEACH

"A SUPER BRUNCH BUFFET"!!!

LESLEY'S "KILLER" MARGARITAS

IN A BLENDER - COMBINE THE FOLLOWING INGREDIENTS:
(12 OUNCES) - LA PAZ MARGARITA MIX / (10 OUNCES) - GOLD TEQUILA /
(3 OUNCES) - TRIPLE SEC or COINTREAU. FILL BLENDER TO ALMOST FULL
WITH ICE. BLEND ON HIGH SPEED UNTIL SMOOTH. ADD 4-5 DASHES OF
"FROTHY" or "FOAMY HEAD" (The secret ingredient!). BLEND UNTIL
FOAMY. TO SERVE: COAT RIM OF MARGARITA GLASSES WITH LIME (& SALT
IF DESIRED). SQUEEZE LIME WEDGE IN EACH GLASS & LEAVE IT. FILL TO
THE BRIM AND ENJOY!!!!!!

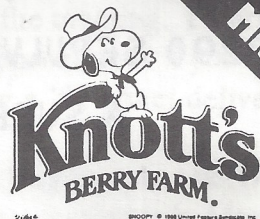
A VALLEY V-8 WELCOME TO OUR NEW MEMBERS

HOWARD SIMPSON / BOB MONNICK
PATRICK BERRY / MILES SCHOFIELD
JOE SCHUBERT / STEVEN BOSKOVICH
BILL KING / RICHARD CHUTUK
GARY KIBBE / GREG PETROSYAN
BILL SCOTT / ABELARDO CORTES
LEE FOSTER / RICHARD KLINE
STEVEN KAWELMACHER

8th ANNUAL FABULOUS FORDS FOREVER!

JOINTLY SPONSORED BY
**FORD MOTOR COMPANY &
THE FORD CAR CLUBS, WESTERN REGION!**
SUNDAY, APRIL 25, 1993

10:00 A.M. to 3:00 P.M.



**DON'T
MISS IT!**

★ **SHOW CARS** ENTER THROUGH THE GATE ON **STANTON AVE.** AT LA PALMA AVE. AND WILL NOT BE ALLOWED IN AFTER 10:00 A.M. JOIN THOUSANDS OF FORD CAR ENTHUSIASTS IN THIS EXCLUSIVE ALL-FORD SHOW FEATURING THE FANTASTIC FORDS FROM 1903 TO 1993.

- ★ **FREE ADMISSION TO CAR SHOW SPECTATORS!**
- ★ **THIRTY-ONE CLASSES – PLAQUES TO ALL REGISTERED VEHICLES!**
- ★ **REGISTERED PARTICIPANT'S WILL BE ELIGIBLE FOR FIVE DRAWINGS – A WEEK'S USE OF A NEW 1993 FORD CAR TO EACH OF FIVE WINNERS!**
- ★ **SPECTACULAR DISPLAY OF "SPECIAL INTEREST" FORD CARS!**
- ★ **DISCOUNT TICKETS TO KNOTT'S BERRY FARM AMUSEMENT PARK CAN BE OBTAINED BY MAIL IN ADVANCE OR AT THE SHOW GROUNDS ALL WEEKEND! TICKETS WILL BE GOOD ANY DAY THROUGH MAY 31.**



APRIL 5-8 BIRTHDAYS

4/3 BONNIE CARPENTER

4/5 BILL CULP

4/7 ELAINE FRANKLIN

4/8 JOE SIMON

4/8 BUD WILLIAMS

4/12 NORM BOOTH

4/13 CLARK MERCIER

4/13 WALTER YOUNKMAN

4/14 MICHAEL TOSHIMA

4/19 JOHN POWELL

4/23 BRUCE BLACKWELL

4/27 GERRY BLACKWELL

Chuck Mair's

SECRETARY'S VIEWPOINT

When John Wolf was ready, our meeting came to order at 7:50 p.m. Past President Joe DiFatta, our secret hand shaker, named Jim Winnett as the winner.

Our guests were introduced - Hal Johnson, Joe Shubert, Bob Fletcher, Gene Sizemor, and Ruth & Tomy Thompson from Northern California.

No minutes to report. Short Treasury report (approx. \$3,100.) Last notice for club dues - 90 members paid up.

It was suggested we list address of our new meeting place.

- APRIL 25 - CAR SHOW "Fabulous Fords Forever"
Knots Berry Farm

- MAY 2 - WOODLEY PARK

- JUNE 5 - MOTION PICTURE HOSPITAL Car Show 9:30 a.m.

- JUNE 20 - MOORPARK COLLEGE

Chuck Mair (should have been Joe DiFatta) received the 1992 Honorable Mention for the Drive Lines Newsletter competition.

Name tag drawing: Ed Harden - not present; Kent Lowry - not present; Joe Setka - winner.

Cal Beauregard presented our club with a large Ford banner.

After cookies and coffee and Lloyd Paschal's Raffle, John Kemmerer introduced our speaker on electric cars. Sixty-four in attendance. Really great meeting - lots of old Fords - Chevys - Plymouth and a Packard, and two Thunderbirds and one Kaiser.

I couldn't believe the fabulous turnout we had for the Jay Leno Tour.

Monday morning, March 8th, driving in my '41 to pick up our dog, I got a thumb's up from Jay Leno driving his Viper. It made my day!!

Chuck Mair

SPRING WILDFLOWERS

By: Lesley Littner

The seasons aren't very well defined in Southern California, at least not in any traditional sense. Summer here has blurry edges, seeping into almost every other month. Autumn is a rumor marked mostly by the avalanche of turkeys in the supermarket freezer cases. And winter? What's that? Snow on the mountains in the distance and old cars bundled-up in garages to keep them from melting in the rain.

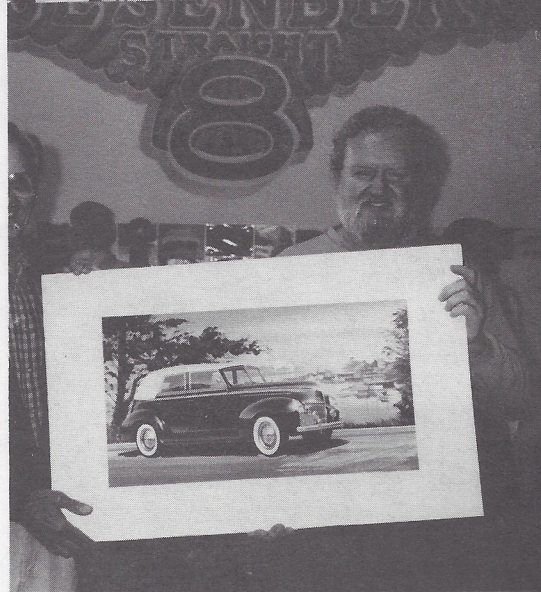
But spring is different, even in Southern California. Spring STARTS one day, just like that. It jumps up in front of us with a sparkle and a wink. Wildflowers appear on the hillsides - where only yesterday there were none.

Such was the good fortune found by the stalwart V-8ers who chose to be a part of our annual wildflower picnic and tour on March 21st. Fifteen old cars filled with picnic supplies and adventuresome occupants met at Woodley Park to seek out the glories of a spring tour. We more or less flipped a coin to decide what our destination was to be, for few of us really believed the wildflowers were in bloom yet. We began a "poker run" and headed off to Lake Elizabeth for our picnic and lots of fun. We munched away while resting on the shores of the lake beneath a comforting sun and enjoyed the cool breezes and warm friendship. We all sang happy birthday to Dennis Keene and completed our poker hands with Blackie Blackwell and Virginia Wolf winning cash prizes. We raffled off some other great prizes too, thoughtfully brought by Joe and Marsha DiFatta. Then we packed up our gear and checked-out our cars. I'm pleased to say that all the cars ran superbly. I guess they too were happy to be a part of our spring adventure. So off we drove to the hillsides near the California Poppy Reserve and there to our delight were fields of beautiful flowers and nearby, contented sheep grazed. We strolled among the colors and shades of spring enjoying the splendid scenery around us. Yes, there were even snow covered mountains in the background!

In whatever guise spring appears, and wherever we encounter it, we let it in, and gladly. We've been expecting it. Up jumps spring. Up leaps the heart.



Great Day at Jay Leno's



WE PAINT FORD CARS WITH SOY BEANS

The farmer's service has been extended. Once his main job was to keep the nation's dinner table supplied. Now he also supplies materials for industry. The farmer helps to build Ford cars and trucks and the Ford Motor Company helps to make farming more efficient and convenient. We help each other and that helps the country.

The enamel developed by Ford chemists for finishing our cars gets one of its principal ingredients from the farmer's fields. This is why we say "We paint Ford cars with soy beans." To make a million V-8's this year, we must use the labor and products of thousands of farmers. The harvest of hundreds of thousands of acres will go into the production of the Ford car. Among other products of animal husbandry and the soil we shall buy...

From the Fields -- Cotton (69,000,000 pounds from 433,000 acres for upholstery, brake linings, timing gears, safety glass.) Corn (500,000 bushels from the harvest of 11,280 acres for rubber substitute, butyl alcohol, solvents.) Flax (2,400,000 pounds of linseed oil from the yield of 17,500 acres for paints, core oil, soft soap, glycerine.) Sugar Cane (2,500,000 gallons of molasses from 12,500 acres of cane for anti-freeze, shock absorber fluids, and solvents.)

From the Pastures: Sheep (3,200,000 pounds of wool from 800,000 head of sheep to be used in upholstery, gaskets, anti-freeze, floor coverings, lubricants.) Cattle (1,500,000 square feet of leather from 30,000 cattle for upholstery and hide glues. Cattle also supplies raw material for milk-casein glues, greases and glycerine.) Hogs (20,000 will be used to supply the lard oil for lubricants, oleic acid and bristles for brushes.) Goats (9,350,000 pounds of mohair from 87,500 goats for making pile fabric.)

The Ford car is a good customer of the farmer and of every industry through which the farmer's products passes for processing. Steadily increasing sales have already given us a good start towards our million goal. Much of this impetus has come from farmers in search of fast, dependable, low-cost transportation for their families and their farm products. They are finding it in the Ford V-8 cars and trucks they helped build.

Coastal Valley's C.H.V.A.
presents
OUR FOURTH ANNUAL
SPRING CAR SHOW
Sunday, May 2nd, 1993
at Woodley Park (on the Grass)

Preregistration only \$10.00 until April 25th, 1993
Day of the Show Registration \$12.00

This is not a swap meet and No "For Sale" signs can be allowed. All vehicles must be in place by 10:00 a.m. As all Southern California Car Clubs are invited we urge early registration to be certain your car will be displayed.

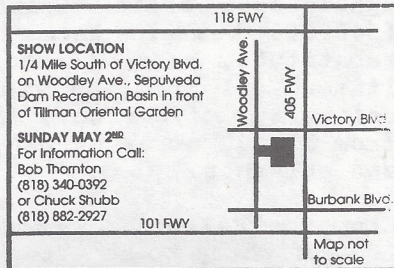
Mail Your Entry Form & Check to :
Coastal Valley's C.H.V.A.,
P.O. Box 2194
Canoga Park, CA 91306

JUDGING BY PEOPLE'S CHOICE

Trophy Classes - Categories 1-12 1st & 2nd Place

- | | |
|------------------------------|---------------------------|
| 1. Antiques (pre 1930) | 8. Gen. Motors (pre 1949) |
| 2. Sports Cars (Foreign) | 9. Gen. Motors (1949 up) |
| 3. Sports Cars (Domestic) | 10. Trucks |
| 4. Chrysler Corp. (pre 1949) | 11. Orphans |
| 5. Chrysler Corp. (1949 up) | 12. Rods/Customs |
| 6. Ford (pre 1949) | 13. Best of Show |
| 7. Ford (1949 up) | 14. Club Participation |

Picnic Tables and Food Vendors in Park



Registration & Car Entry Form

Pre-Registrations must be received by April 25, 1993

Please Print in Heavy Block Letters

Name _____ Last _____ First _____

Address _____ Street _____ City _____ State _____ Zip _____

Type of Vehicle _____ Year _____ Make _____ Body Style _____

Club Affiliation _____

Pre-entry Fee \$10.00 _____ Day of Show Fee \$12.00 _____

In consideration of acceptance to the CHVA Spring Classic, the undersigned owner and/or exhibitor hereby fully and unconditionally agree to:

1. Release Coastal Valleys region, CHVA, its representatives and Los Angeles City Department of Parks and Recreation from any liability that may arise out of the May 2nd auto show at Woodley Park, and
2. Release all officials jointly and severally from any and all liability arising from said event, and
3. Warrant that the undersigned has personally read the above rules, maintains valid auto liability policy, and will abide by said rules and regulations.

Date _____ X _____
owner-exhibitor signs here

A LOOK INTO THE FUTURE OF THE AUTOMOBILE

By: Lesley Littner

He wouldn't say exactly what the price tag for the "Electric Car" will be but, that it would be very competitively priced with typical sporty commuter cars.

Guest speaker at our March 7th meeting, James Souther, told us all about the third generation "IMPACT" electric car. He is currently working at Hughes in Torrance on it's research and development. He seemed very optimistic about the IMPACT being a viable zero emission alternative to the internal combustion engine cars of today.

The IMPACT is designed as a sporty commuter car with a two passenger capacity. It's pretty quick, going from 0 to 60 mph in 6.2 seconds, with a top speed of 92 mph but, it may eventually be limited to a maximum of 75 mph. It's real quiet inside, with the air conditioning system being the loudest working component. It comes equipped with regenerative brakes (electric), dual air bags, power steering (electro-hydraulic), keyless entry, cruise control, a/c, power windows and locks, a spare tire, special storage space for sports equipment such as golf bag or bowling bag, and a premium sound system (which supposedly is amazing because of the quiet interior). It has an aerodynamic aluminum body with a belly pan underneath which almost totally encloses the car. It uses 1990's efficiency in all systems and special hard, high-pressure tires, much like the kind used on racing bicycles.

The car weighs in at about 2,200 lbs. of which 938 lbs. are the batteries it runs on. It is direct drive (no transmission) and uses AC induction motors. It produces 25 amps at about 400 volts while cruising. There are a total of 27 "gel-type" batteries on board. The car's range depends on the battery charge. Currently it has a range of 60-80 miles and they are working to increase it to about 100 miles. It is estimated that the cost to recharge the batteries is eleven cents. It will take approximately 15 minutes to recharge from 40% to 80% at "future energy sites" similar to the AM/PM gas stations of today. The life of the batteries (lead/acid) at this point is about 40,000 miles. Each battery will be able to be replaced one at a time at a cost comparable to one of today's batteries. (The cost to replace a complete battery pack is expected to be about \$1,500.). The batteries are approximately 94-96% recyclable - suggesting no 'significant' toxic waste.

The car will come with a "convenience charger" that plugs-in anywhere. Curbside, it plugs in at 220 volts. It is expected to have a longer life-span than internal combustion cars because of very little "wear and tear" and significantly fewer parts. So far it is believed that American technology and development of the electric car is ahead of the Japanese - but not by much! Let's hope that the "Big Three" can get their acts together in time for America to play a significant role in the evolution of the car.

CARS & PARTS WANTED

ITEM	Name / Phone
Enclosed Car Trailer - have one or more Vintage cars to swap. '51 Packard, '68 Cadillac Convertible,	Bill Toensing 818-578-1699 day.
'60 Cadillac 4-door, '55 Pontiac.	818-355-1129 eve.
'42 Mercury Dash - plastic; Back Seat; Lower Cushion; Windows	818-507-6621 pgr. 818-604-7293 res.
Trailer with good license. No matter what condition!	Davids 818-848-8703 818-353-2992 eve.
'75 - '78 Chevy 3/4 ton Van - V-8; AC Convertible - any make	Miles Schofield 818-342-8881'52 Chuck Shubb 818-882-2927
'52 Ford F1 Shock Mount; R & R Lower	Lee 818-846-4906
'48 Ford License Plate Bracket (rear)	Albil 818-366-8282
'38 - '40 Ford Pickup Transmission Floor Board Cover	Joe Schubert 818-885-8581
'52 - '53 Ford Victoria	Ernie Baily 805-522-9674
'52 - '54 Ford Rear End Complete	Don O'Barr 818-848-4979

CARS & PARTS FOR SALE

ITEM	Name / Phone
'53 Mercury Station Wagon - Stick w/o.d. \$650.00	Blacky Blackwell 805-268-0040
Two '38 Ford Convertible Sedans Two Model T Fords (Touring & Speedster)	Dupree (818) 883-2747

SUPPORT OUR ADVERTISERS!

DiFATIA *Graphics*

Specializing in
Complete Quality Printing

5920 LEMONA AVENUE • VAN NUYS, CA 91411
(818) 782-9883

Flips TIRE CENTER

FLIP SMITH

Formerly
GLOBE TIRE

7735 Sepulveda Blvd.
Van Nuys, CA 91401
(818) 786-8688

DON'S Auto Parts

MACHINE SHOP and BALANCING

Monday thru Friday 8 a.m. to 7 p.m.
Saturday 9 to 6 - Sunday 10 to 4

10241 Woodley (At Devonshire)

Domestic &
Foreign
Parts & Supplies



(818)
894-6441

Sepulveda, CA 91343

RAFFLE PRIZE DONOR

DAVID'S VENDING SALES AND SERVICE

DISTRIBUTOR FOR:

Cavalier
WITTENBERG

LETTRO-VENT

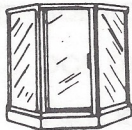
**BREWOMATIC:
HAMILTON**

COINCO • Amoro

800 S. San Fernando Blvd.
Burbank, California 91502

(818) 848-8703
DAVID SATEL

ST. LICENSE #462714



ARNIE LIEBOWITZ TOTAL GLASS WORKS

(818) 780-4000

- ★ CUSTOM MIRRORS
 - ★ SHOWERS & STEAM ENCLOSURES
 - ★ COMMERCIAL STOREFRONTS
 - ★ SOLARIUMS
 - ★ TEMPERED GLASS
 - ★ WINDOWS SCREENS & SCREEN DOORS
- 14647 ARMINTA ST. - PANORAMA CITY, CA

R.C. Smith's Roofing Solutions

Roofing & Waterproofing • Complete Maintenance Service

8707-D Lindley Ave., Ste. 199, Northridge, CA 91325
Lic. #356650 (818) 718-2313

Auto • Homeowners
- ANTIQUE CARS -

ED HARDIN INSURANCE

Business • Life • Health • Aircraft



Call us for your Insurance needs!

(818) 363-7864

Antique Car Radio
Repairs & Restoration

Over 50 Years
Experience

NORB FOURNIER

Van Nuys Antique Radio

13133 Weddington St.
Van Nuys, Ca. 91401

(818) 784-5836

SUPPORT OUR ADVERTISERS!

L.T. "LEE" SAWYER, INC.

Jobber
Shell Oil and Chemical Products

14117 Aetna Street, Box 369
Van Nuys, California 91408

TOM SAWYER (818) 786-8180 / (818) 785-0902

RAFFLE PRIZE DONOR

The Prudential



California Realty

13400 Ventura Blvd.
Sherman Oaks, California 91423
Bus. (818) 788-5400
Res. (818) 761-1734
Fax. (818) 784-4926

AL SPENCER
Broker Consultant



RESIDENTIAL • COMMERCIAL



KELLY ELECTRIC

ELECTRICAL CONSTRUCTION • MAINTENANCE

DAVE KELLY
ST. LIC # 657087

(818) 773-8997
(805) 255-6905

United Equity Corporation of America Mortgage Division

BEN F. DIFATTA
Broker/Loan Consultant

Main Office
5530 Corbin Ave., Ste. 310
Tarzana, CA 91356
(818) 774-3819
Fax (818) 774-3823

Branch Office
Phone/Fax
(818) 716-5583
Pager (818) 417-2336

Real Estate Broker, Calif. Dept. of Real Estate

THE 1993 MEMBERSHIP DIRECTORIES
WILL BE AVAILABLE FOR PICK-UP
AT THE MEETING.

SEE YOU THERE!

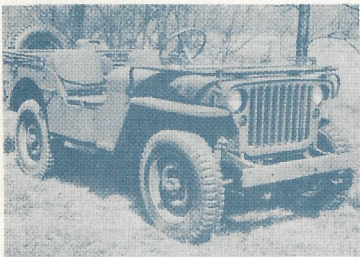
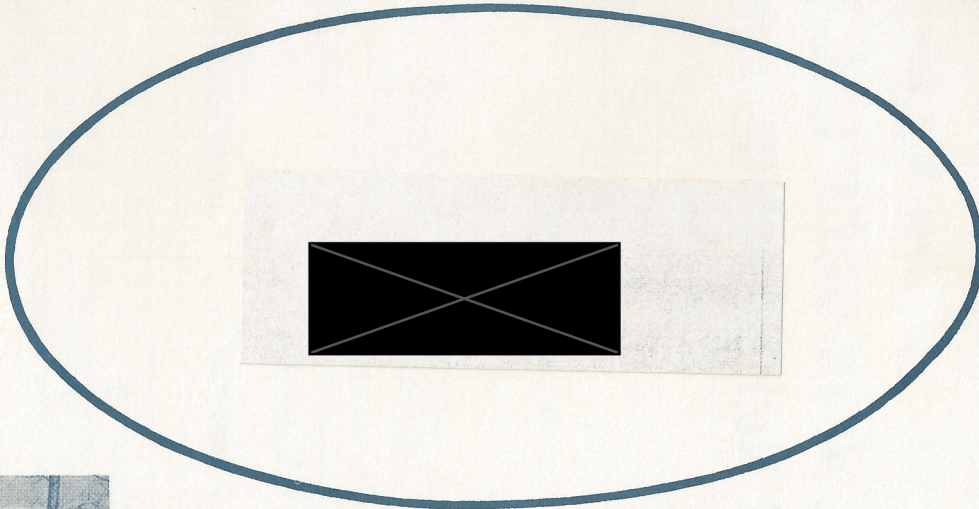
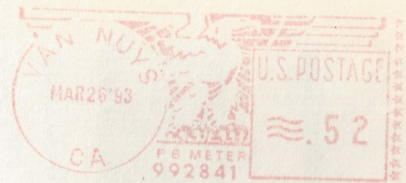
PAST PRESIDENTS

JIM ROWE.....	1971
DOUG PETERSON.....	1972
DON DURKEE.....	1974
ED WARNOCK.....	1975
JOHN BUSK.....	1976
CHIP WERSTEIN.....	1977
STAN MARSRAJE.....	1978
BOB DRAKE.....	1979
BILL CULP.....	1979
AL SPENCER.....	1980
LARRY CAPLAN.....	1981
BOB ROSE.....	1982
DON DURKEE.....	1983
PAUL KIRK.....	1984
KENT LOWRY.....	1985
DAVE SANBORN.....	1986
JOHN KEMMERER.....	1987
DUDLEY OCHSNER.....	1988
JERRY JENSEN.....	1989
JERRY JENSEN.....	1990
JOE DiFATTA.....	1991
CHUCK SHUBB.....	1992

Meetings are held on the first Sunday of every month at 7:00 p.m.

The Valley  **'s**

P.O. BOX 96 — RESEDA, CA 91335



1943 Ford Jeep