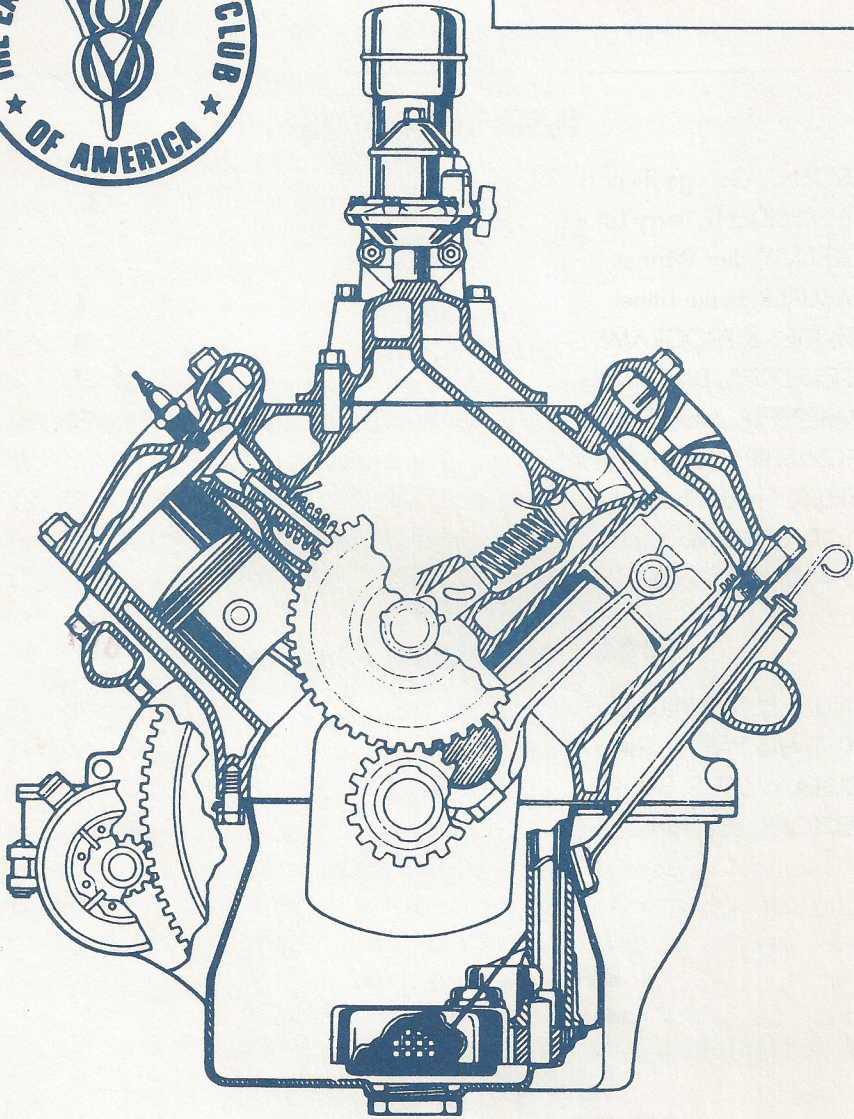


94



MARCH



Drive Lines

The Valley s

1994 OFFICERS

PRESIDENT, George Richards	(818) 992-4537
VICE PRESIDENT, Jerry Littner	(818) 347-1194
SECRETARY, Jim Winnett	(818) 768-4228
TREASURER, Leslie Littner	(818) 347-1194
ACTIVITIES & PROGRAMS, Chuck Shubb	(818) 882-2927
ACCESSORIES, Dick Smith	(818) 993-9538
MEMBERSHIP, Joe DiFatta	(818) 782-9883
FELLOWSHIP, Marilyn Salkin	(805) 527-4387
RAFFLES, Chuck Shubb	(818) 882-2927
EDITOR, Chuck Mair	(818) 785-9413
TECHNICAL ADVISOR, Don Dupree	(818) 883-2747

1994 Committee Chairmen

ANNUAL PEPPERMILL, Dudley Ochsner	(818) 446-1206
CHRISTMAS PARTY, Santa Claus	(800) SANTA 25
TEQUILA WILLIE'S, Bob Rose	(818) 362-4842
DIRECTORY, Paul Kirk	(818) 886-5467

Drive Lines

Published By

SAN FERNANDO VALLEY CHAPTER 40
of the EARLY FORD V8 CLUB OF AMERICA

P.O. Box 96
Reseda, CA 91335

COVER/ROY JONES

The Valley V8's

MARCH 1994

From the Shakey Desk of the President

Well! We started this year out with a bang. Our first tour of the year was to Route 66. A great Pasadena restaurant. We had 15 cars tour from the valley and we joined the others at the restaurant to make a good sized group of 28. It sure was good to see our friends from all over Southern California. I want to thank you all for coming and a special thanks to all those who helped to make this meet fun for us all.

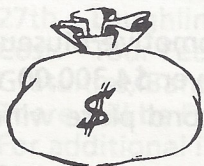
The rock and roll we just experienced had nothing to do with the '50s. It was more like a 6.7 as you all already know. I want to say to all our members who suffered damage to their homes in the Big Quake, we wish you the best and if we can help in any way please call. We'll do what ever we can. Also, if any of your cars were damaged, I would suggest that you contact your insurance company, if you haven't done so. I know some of our members have found J.C. Taylor very cooperative in settling claims.

Be sure to contact Jay Harris if you wish to join the "Harris Tour" from Southern California to the Western National Meet in August. Call Jay at (714) 586-4150. Hope you join up because there's "fun" in numbers. (August 1st through August 8th)

There will be a San Diego swap meet in March (more info inside) and we'll tour with Durkee to Solvang in April. The program for our monthly meeting, March 6, will feature a representative from the DMV to speak on old car prices. I look forward to seeing you all there next month.

George Richards

JACKPOT



\$20.00

Could Be Yours!

(You just have to be present and wear your name badge to win.)

**PROGRAM FOR MARCH 6, 1994
CONGREGATIONAL CHURCH HALL
9659 Balboa Boulevard, Northridge
ENTER ON SUPERIOR AVENUE - PARKING LOT**

Our speaker for March 6th is Pete Myers, from the Department of Motor Vehicles.

Pete will talk to us about registration of our classic cars, how the DMV looks at us, and the problems that arise out of registration, establishing values, and answer questions regarding rules and regulations, and what to expect in the future.

**SAN DIEGO AUTO SWAP MEET
2235 Encinitas Blvd., #214
Encinitas, CA 92024
619-436-6666**

The San Diego Auto Swap is ready to kick off the 1994 calendar, our first show will be March 27th at the Jack Murphy Stadium.

We appreciate all the support the San Diego Car Clubs have given us in 1993. A special thanks from Big Brothers. The total funds received by Big Brothers at our 1993 events make the San Diego Auto Swap their second largest income generator.

First:

Big Brothers will now be handling the concessions, this will improve the quality and service of the food at our event.

Second:

We have now added motorcycles and off-road vehicles to the event.

Third:

In cooperation with the San Diego Automotive Museum, we will be holding a car show at each show. Over \$4,300.00 will be awarded along with trophies to first and second place winners in each of 5 classes.

1925-older, 1926-1948, 1949 -1958, 1959-1968, 1969-newer

**TOUR ON SATURDAY, MARCH 26TH
PASADENA MODEL RAILROAD CLUB
MEET AT WOODLEY PARK – DETAILS TO FOLLOW**

Our tour for Saturday, March 26th is the Pasadena Railroad Club. We will meet at Woodley Park at 12:30. We will travel to El Sereno in group, and experience seeing the largest model train set up you can imagine. In a several thousand foot room, the trains require a 28 man crew to operate the many trains on several thousand feet of tracks.

The Pasadena Model Railroad Club was started in April of 1940 in a store front in Pasadena. Over the years, the club has been forced to move three times. We own our building now, so there won't be any more cancelled leases in our future. This is the fourth layout, which we think is our best effort to date. At present we have approximately 60 active members and 1 junior member.

The layout is a true point to point railroad with a capacity of 2000 plus cars and over 200 engines. All engines are powered. There are three yards: Alhambra, Midway, and Zion, ranging from 30 to 40 feet in length. The layout was designed for operation with five major commodities chosen to simulate traffic hauled by a first class railway: lumber, coal, ore, grain, and oil. The size (4500 sq. ft.) of the railroad allows us to operate prototypical length passenger and freight trains. The membership meets every Tuesday and Saturday, with the first Tuesday of each month as the date for the business meeting.

Pasadena Model Railroad Club
5458 Alhambra Avenue
Los Angeles, CA 90032

**WHO - SOUTHERN CALIFORNIA REGIONAL
WHAT - MOTHER ROAD TOUR (ROUTE 66)
WHERE - UPLAND TO LAUGHLIN
WHEN - MARCH 25, 26, 27, 1994**

25TH Upland-Laughlin

26TH Oatman-w/Banquet in Evening

27th Laughlin, Needles & Home

Cost: Tour Fee \$160.00 per couple which covers Tour package, Gratuities, Banquet, and a room for two nights at the Gold River. There will be Preferred Parking for our old cars

For additional information call **Lee Foster @ 909/598-8964**

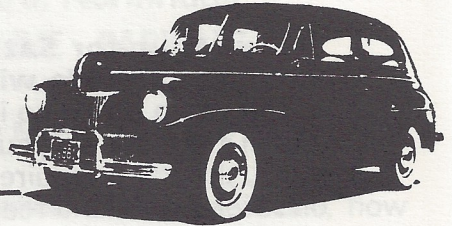
Please RSVP by **March 1, 1994** as reserved space is limited and the preparations for the Banquet must be finalized by March 5, 1994.



THE
Early Ford V8

CLUB OF AMERICA

P.O. BOX 2122
SAN LEANDRO, CA 94577




JANUARY 1994 NATIONAL DIRECTORS MEETING REPORT TO REGIONAL GROUPS

1. Our Membership stands at 8,300, with more expected.
2. A video tape is available as a promotional for the Western National Meet in Colorado (Steamboat Springs). I have the tape available. Drop me a line!
3. To draw more attention to 2nd and 3rd membership renewals, they will be mailed on colored paper.
4. A discussion about raising National dues resulted in NO Raise. We have had the same \$25.00 membership fee for 10 years. Quite an accomplishment!
5. The 35-6 Book is now scheduled for print in April. Notice of pre-sale will appear in the V8 Times. It should be about 70 pages and have color chips included.
6. How would the Membership feel about a book on Ford Accessories ?
7. Ken Terrio National Chief Judge for 5 years has retired. Ed Warnock will succeed him.
8. Our V8 Club is not affected by Ford Motor Company's Ford logo infringement dispute.
9. The V8 Times may print some of the National Boards meeting results in future issues.
10. Try to encourage others to join our Club. They will thank you some day.
11. Have you asked your membership if they need any National Accessories ?

Howard D. Simpson

Howard D. Simpson
National Vice President EFV8



MARCH 1-8 BIRTHDAYS

- 3/01 GORDIE CHAMBERLAIN
- 3/03 STEVE SADD
- 3/12 SUSAN FABER
- 3/13 WHITNEY RYDRECK
- 3/15 BILL NOLAN
- 3/16 DON ASHWORTH
- 3/16 TOM RIELA
- 3/18 RUTH MOTERN
- 3/18 ED WARNOCK
- 3/21 DENNIS KEENE
- 3/25 KENT LOWRY
- 3/26 SHARON FOSTER
- 3/30 POLLY MAIR
- 3/30 RUTH THOMPSON

GRATEFUL FOR THE KICKS AT "ROUTE 66"

On Sunday, February 6th, 53 members and their guests, representing four chapters of the Early Ford V-8 Club of America got together for cars, food and kicks at the "Route 66" restaurant in old Pasadena. It was a really nice change from earthquake clean-up chores!

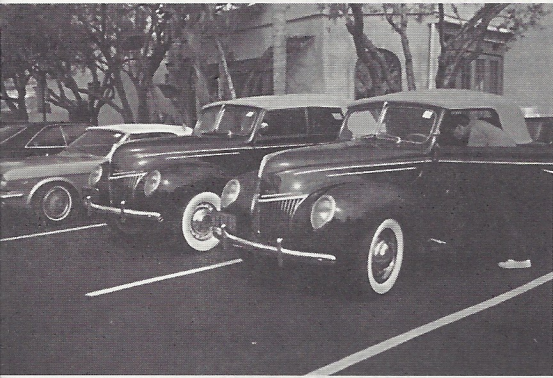
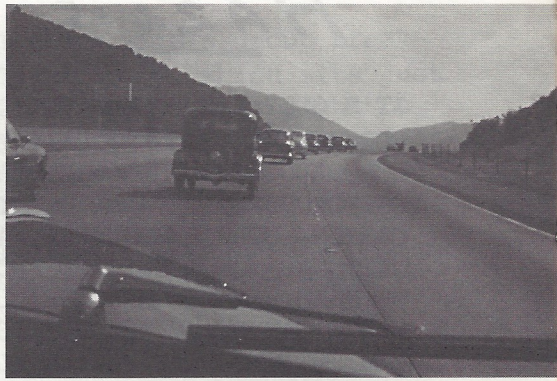
It felt a little bit strange as we caravanned through damaged and destroyed neighborhoods en route to the restaurant. Several of our glorious freeways were still closed. Eleven old beauties and one piece of modern iron from the Valley V-8 club's collection proved willing and able to make the journey. Lots of folks along the way cheered us on as we passed by. This felt real good. Piling up cinder blocks and bricks on a perfectly good Sunday afternoon seemed wrong. Caravanning with our buddies seemed just right.

When we arrived at the restaurant, we were met by friends from the Ventura V-8 club, the Baldy View V-8ers and the Southern California V-8's. A total of 27 old cars parked next to each other to be a part of the "People's Choice" awards judging. Prez. George Richards assigned each car a number and then supplied us with ballots for the BIG VOTE. After enough nudging to get all the ballots cast, we all went inside the restaurant to have lunch and announce the winners. Real neat loving cup trophies were awarded to the winners. The 3rd place trophy went to Dennis Keene for his '32 Ford Roadster. Second place was awarded to Richard Valleroy and his '36 Ford Convertible. The big winner...first place...went to our own President -George for his beautiful-as-always '39 Ford Convertible! Do you think something fishy could have gone on? Not after you saw George's face and how embarrassed he was to have won his own contest! Fine cars all...and each car got at least one vote. I wonder how that could have happened. Do you think everybody who drove an old car might have voted for themselves? Huh!

Some of us found the great antique shops across the street and did our best to bring home replacements for recently lost treasures. I found a new-old egg-beater to add to one of my surviving collections. Lunch was good and the conversations quite lively. We all shared a little about the earthquake and how our treasured cars made it through. It was sad to hear about some of the damage. But these old clunkers have survived this long and, no old quake was gonna put an end to their lives. Rebuilding and restoring is a way of life for us. Car enthusiasts to the very end. All in all it was a really great turnout and lots of kicks! Who could ask for more?

Regards to all,

Lesley Littner



'HARRIS' TOUR 1994

IT'S ONLY SIX MONTHS UNTIL THE 'HARRIS' TOUR LEAVES FOR THE WESTERN NATIONAL MEET IN STEAMBOAT SPRINGS, COLORADO. THE TOUR WILL TAKE 7½ DAYS AND WILL TAKE US THRU UNBELIEVABLE SCENIC AREAS, SUCH AS THE GRAND CANYON, UTAH'S MONUMENT VALLEY AND NATURAL BRIDGES NATIONAL MONUMENT, AND ARCHES NATIONAL PARK OUTSIDE OF MOAB. IN COLORADO WE'LL SEE SCENIC TELLURIDE AND BLACK CANYON OF THE GUNNISON, AND STAY OVERNIGHT IN SPECTACULAR OURAY. WE'LL ALSO BE STAYING IN GLENWOOD SPRINGS, HOME OF THE WORLD'S LARGEST NATURAL HOT SPRING SWIMMING POOL. FOLLOWING IS AN UPDATED LIST OF HOTELS AND ALTERNATES. I URGE YOU TO RESERVE YOUR ROOMS NOW AS SOME AREAS ARE ALREADY BOOKED UP:

MONDAY, AUG 1ST: We will depart the Doubletree Hotel in Ontario at 7 AM so some of you may wish to spend Sunday night there - pho - 1-800-528-0444. We will tour to Kingman, Az. for the night, with a stop in historic Oatman.

HOTEL: Best Western A Wayfarers Inn
602-753-6271

ALTERNATE HOTEL: Best Western Kings Inn
602-753-6101

TUESDAY, AUG 2ND: Today we will tour on Old Route 66 to Peach Springs, where we will explore Grand Canyon Caverns. Then it's on to Seligman, where we rejoin I-40 for Williams, then take 180 north up to the south rim of the Grand Canyon.

HOTEL: Maswik Lodge 602-638-2631

ALTERNATE HOTEL: Yavapai Lodge 602-638-2631

ALTERNATE HOTEL: Bright Angel Lodge 602-638-2631

* ALTERNATE HOTEL: Moqui Lodge 602-638-2424

* ALTERNATE HOTEL: Quality Inn 602-638-2673

(The first 3 hotels have a common central reservation number). * These hotels are located just outside of the south gate to the Park - only 8 miles from the others.

MORE →

COME JOIN US - TOUR TO COLORADO

WEDNESDAY, AUG 3RD: Today will start with a group breakfast in the famous 1905 El Tovar Hotel, which sits just 50' from the canyon rim. It's a spectacular sight to watch the sun rise while enjoying an El Tovar breakfast. The bulk of the day will be spent sightseeing along the canyon rim, with our night's destination being Kayenta.

HOTEL: Holiday Inn 602-697-3221

ALTERNATE HOTEL: Wetherill Inn 602-697-3231

* ALTERNATE HOTEL: Anasazi Inn 602-697-3793

** ALTERNATE HOTEL: San Juan Inn 801-683-2220

* Located 11 miles west of Kayenta

** Located 45 miles north of Kayenta in Mexican Hat, Utah (This is right on Thursday's tour route)

THURSDAY, AUG 4TH: Today we will see the Monument Valley area where John Wayne made all of those westerns. We will see Natural Bridges National Monument and other sights in the area, stopping in Monticello tonight.

HOTEL: BW Wayside Inn 801-587-2261

ALTERNATE HOTEL: Monticello Days Inn 801-587-2458

FRIDAY, AUG 5TH: Today will be another scenic feast as we visit Arches National Park, and the Moab area, including Squaw Flats Scenic Byway. Then on to Moab for the nite.

HOTEL: Days Inn 801-259-4468

ALTERNATE HOTEL: Landmark Motel 801-259-6147

ALTERNATE HOTEL: Inca Inn Motel 801-259-7261

SATURDAY, AUG 6TH: Today we will tour into Colorado, with a stop in historic Telluride, where Butch Cassidy took an unauthorized withdrawal from the bank for \$30,000. Then it's on to Ouray (you won't believe the scenery!)

HOTEL: Cascade Falls Lodge 800-438-5713

ALTERNATE HOTEL: Matterhorn Motel 303-325-4938

SUNDAY, AUG 7TH: Today we're in for more spectacular scenery as we visit the Black Canyon of the Gunnison National Monument - sheer, black cliffs 1000 ft down! Other great Colorado roads as we head to Glenwood Spgs.

HOTEL: Glenwood Hotsprings Lodge 303-945-6571

ALTERNATE HOTEL: Best Western Antlers Motel 303-945-853

MONDAY, AUG 8TH: Today we will tour the last 120 miles to Steamboat Springs, arriving by noon.

Jay Harris
714-581-9456

DON DURKEE'S SOLVANG TOUR APRIL 9 & 10 OVERNIGHT TO SOLVANG

Don & Mary are planning a great weekend to Solvang. Dust off the classics and let's start rolling. (limited accommodations) Here's what you need to do.

1. Before March 9th, call the Solvang Royal Scandinavian Inn - Make reservations.

Note the check-in time of 4:00 p.m., and check out time of 11:00 a.m.

RATES: (Based on single or double occupancy)

\$85.00 net, standard (one queen or two double beds)

\$105.00 net, upgrade (one king or two queens, poolside)**

\$10.00 net, additional person (max 4 persons per room)

*Plus Occupancy Tax (currently 8%)

*Upgraded rooms, if requested, are subject to availability.

Attendees may call 800-624-5572 and request rooms from the group block by identifying themselves with the Ford V-8 Car Club. The first night's deposit (by credit card or check) is required to confirm each reservation by March 9, 1994. After this date (or when block is full), reservations will be on a space available basis only, at regular hotel rates.

For individuals interested in extending their visit, we will offer special rates Sunday -Thursday nights at \$70.00 for standard rooms and \$90.00 for upgraded rooms. Additional nights are subject to availability.

2. Call Don or Mary (805) 495-5298 tell them "yep" we're going! Then pack your clothes for a great weekend. Saturday night dinner includes either; Surf & Turf, filet mignon & shrimp - \$27.26, or Lemon Herb Chicken - \$21.00. You'll need to send check to Durkee.

3. April 9, leave from Carrow's Restaurant at Harbor Blvd & Seaward Ave. in Ventura. Breakfast 8 a.m. Leave Carrows at 9 a.m.

4. Leave the rest to our tour guides!!

Fascinating figures from life in the '30s

Dear Ann Landers: I thought your readers might be interested in something different. Here's what life was like in 1930.

- Five gallons of gasoline — 85 cents.
- One gallon of kerosene — 18 cents.
- One quart of oil — 15 cents.
- A haircut — 25 cents.
- A roll of toilet paper — 25 cents.
- My telephone bill — \$2.25 a month.
- Three pounds of rice — 18 cents.
- A gallon of milk — 12 cents.
- One dozen eggs — 22 cents.
- A bakery-type apple pie — 10 cents.
- Two loaves of bread — 10 cents.
- Two pounds of butter — 25 cents.
- Three pounds of brown sugar — 21 cents.

I used kerosene lamps, and the stove was kerosene-run as well. We had no electricity. My average income from 1930 through 1933 was \$3 a week. Our first child was born at home. We called the doctor at 7 p.m., and he stayed until the birth, which was 9 a.m. the next morning. His bill was \$10. Hard to believe how much things have changed.

— Z.W. Smoker, Muncie, Ind.

Dear Z.W.: Thank you for those fascinating figures, but please keep in mind that was 64 years ago and the depth of the Depression to boot. Would you want those days back again? I wouldn't.

Old candy bars

For its 100th anniversary, this month Hershey is introducing limited-edition Hershey Bars, each with one of four designs imprinted on the chocolate, inside collectible wrappers. The new bars will cost the same as Hershey's regular bars, and each will bear the signature of Milton S. Hershey. Next month, Hershey rolls out NutRageous, the first Reese's product in bar form. (Fact: The Hershey, Pa., factory needs 50,000 cows to provide enough milk for one day's production of chocolate.)

Reprint from *Old Car Weekly...*

Many of us have had the privilege of visiting Merle Norman - San Sylmar Car Collection. Hopefully we will be able to visit them again.

HOBBY NEWS

edited by Ron Kowalke

Earthquake affects car collectors

By Phil Skinner

Monday is not normally a favorite day for most people. For those living in the Los Angeles area on Monday, Jan. 17, that day literally fell apart at a little past 4:30 in the morning.

Two almost simultaneous earthquakes jolted the entire Los Angeles basin in those pre-dawn hours, tearing apart freeways, collapsing homes, apartments, shopping malls, and tearing up railroad tracks.

Fire erupted from severed gas lines, and homes burned as water pipes had broken, hampering responding fire units in battling the blazes. Tragically, over 50 people lost their lives as a result of the tremors, which registered 6.6 on the Richter scale.

The earthquakes were centered in the San Fernando Valley of Los Angeles County. The first quake was located under the community of Northridge. The second quake, occurring within seconds of the first, shook on the Sylmar fault line. This is the same fault that caused over 60 deaths and millions of dollars of damage nearly 23 years earlier in 1971.

Located almost directly over the Sylmar fault line was the prestigious Merle Norman Auto Collection. Housed in a large concrete six story building, the Norman collection is administered by J.B. Nethercutt. Over 100 of the world's finest cars are displayed here, which also houses a complete restoration facility.

"Miraculously, we did not have any significant damage to the auto collection," spokesman Armin Lohbrunner told *Old*

Cars, "but the building and musical instruments did suffer some heavy damage, and the collection will be shut down to the public for at least a year or so."

The jolt of the quake literally lifted a lot of the cars off the ground, and moved them about one foot from where they had been parked.

"But there was no damage to these classic vehicles for two reasons, Lohbrunner stated. "First they were parked far enough apart so as not to collide, and second, they all seemed to move in unison."

The musical instruments that were damaged comprise one of the largest collections of mechanically operated music boxes, and several giant pipe organs. The pipe room was described as, "looking like a spaghetti factory." The entire sixth floor of the collection will have to be removed. The restored cars were displayed in a one story showroom, which held up to the shaker better than other parts of the collection.

"About the only damage we had to any of our cars was in our storage area near the shop," Lohbrunner said. "A 1938 Cadillac jumped in the same manner as those on the showroom floor, only it hit some stored magnetos. This damaged the bumper slightly."

Despite floods, fires, and earthquakes, those living in and around Los Angeles continue to stay and play where cars are kings.

WORD SEARCH
Car Parts

R E N A E L C R I A S T E E R I N G W H E E L P Z L
 E S J X L N R O H I T A E S T E K C U B R A K A I A
 Z O T L I G C T G R A N O L A N G I S N R U T C D E
 Z H R E I A L A O B D L W O E G U A G W I R E S A S T
 U Z I T R S O R G E I D N D M K L T N W H N J Z A S H T
 B N K R G K C E M F L L M O B I K E I H S Y Z G H G
 G I S I L E K N O L I O U M L Y O U R E X P I L C G
 N U T M G T O E L E Z F L E E S U S P E N S I O N I
 I G A N N K R G D C E I O T M W N L S P M A L G X L
 N N C W I P E R I T R N C E O I A N S J K N O B S D
 R I H B R C D A N O S A G R O T Y E P Z I N C Y N A
 A W O A A X O E G R H M N Y E C A M M L O C K O E E
 W O M P E R O G E B A E I F G H B I A Q P K A N L H
 A D E E B I H P T O F K R Q N R U R L X S W E R C S
 T N T D D B M S D D T A E M I E S R C L Y B Z A H N
 E I E A C U E O O Y M T E N H L H O D O I N G D E O
 R W R L B R A C K E T N T S K F I R Q M X G P I A I
 P Q Z X M N B N T N A I S N C F N E T I E L H A T S
 U N O R N O A I N G H I Y O Y U G A O D M O M T E S
 M O A E Q T R Z E I X R E T E M T L O V A F O R O R I
 P G T L L E Y X V N C I U T C H Q G B N R I N O R M
 C N N E K J A C K E X H A U S T M A N I F O L D D S
 A A U A R M U R D E K A R B A C O M P R E S S O R N
 F F E R E T E M M A E E S R O S I V N U S T L O B A
 R P B R A C E H A N D L E S P E E D O M E T E R M R
 S H O C K A B S O R B E R E L I O P S I S S A C H T

- | | | | | |
|----------------|------------------|---------------------|-----------|------|
| AIR CLEANER | DOOR | LENS | | |
| AIR DEFLECTOR | EMBLEM | LICENSE PLATE FRAME | | |
| AMMETER | ENGINE | LOCK | | |
| ANTENNA | EXHAUST MANIFOLD | MIRROR | | |
| ARM REST | FAN | MOLDING | | |
| AXLE | FUEL TANK | MUFFLER | | |
| BEARING | FRAME | NUTS | | |
| BODY | GAS CAP | ODOMETER | | |
| BOLTS | GASKET | PEDAL | | |
| BOOT | GAUGE | RADIATOR | | |
| BRACE | GEAR | RADIO | | |
| BRACKET | GENERATOR | ROOF | | |
| BRAKE DRUM | GRILLE | SCREWS | | |
| BUCKET SEAT | HANDLES | SEAL | | |
| BUMPER | HEADLIGHTS | SHOCK ABSORBER | | |
| BUSHING | HEATER | SKIRT | | |
| BUSTONS | HINGE | SPEEDOMETER | | |
| CHASSIS | HOOD | SPEAKER | | |
| CLAMPS | HORN | SPOILER | | |
| CLIP | HOSE | SPRING | | |
| CLOCK | INTAKE MANIFOLD | STABILIZER SHAFT | | |
| CLUTCH | JACK | STEERING COLUMN | | |
| COMPRESSOR | KNOB | STEERING WHEEL | | |
| DASH | LAMPS | SUNVISOR | | |
| SUSPENSION | SWITCH | TACHOMETER | TAILLIGHT | TIRE |
| TRANSMISSION | TRIM | TURN SIGNAL | VOLTMETER | VENT |
| WARNING BUZZER | WATER PUMP | WHEEL | WINDOW | WING |
| WIPER | WIRE | | | |



**PLEASE DRIVE CAREFULLY.
MY BUMPERS ARE ON THE SCRAP HEAP**

Rita Hayworth directs attention from her 1941 Lincoln Continental bumpers to contributing metal to the war effort. Hayworth was also active in selling war bonds.

SUPPORT OUR ADVERTISERS!

L.T. "LEE" SAWYER, INC.

Jobber

Shell Oil and Chemical Products

14117 Aetna Street, Box 369
Van Nuys, California 91408

TOM SAWYER (818) 786-8180 / (818) 785-0902

RAFFLE PRIZE DONOR

The Prudential



California Realty

13400 Ventura Blvd.
Sherman Oaks, California 91423

Bus. (818) 788-5400

Res. (818) 761-1734

Fax. (818) 784-4926

AL SPENCER
Broker Consultant



KELLY CONSTRUCTION

AND ELECTRIC

LIC. # 657087

GENERAL CONTRACTORS

"Remodeling Specialists"

2558 Nicholas St.

Simi Valley, CA 93065

DAVE KELLY

Phone/Fax: (805) 520-6444

R.E. SALES

LOAN CONSULTANT

Ben F. DiFatta

MORTGAGE BROKER

LICENSED CA. DEPT. OF R.E. BROKER

23534 CANDLEWOOD WAY, WEST HILLS, CA 91307
PHONE/FAX 818-716-5583 PAGER 818-831-4567

CHRIS CONNERS' Ancient Transmission Repair



Specializing in Standard Ford Transmission Rebuilding

THREE SPEEDS-FOUR SPEEDS-OVERDRIVES

(310) 618-1586

Antique Car Radio
Repairs & Restoration

Over 50 Years
Experience

NORB FOURNIER

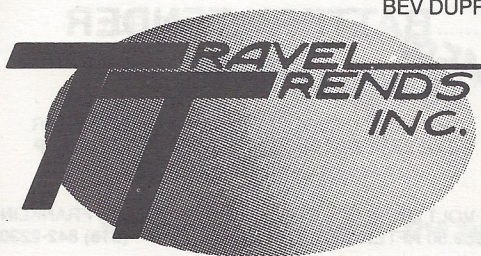
Van Nuys Antique Radio

13133 Weddington St.

Van Nuys, Ca. 91401

(818) 784-5836

BEV DUPRÉE



HOME (818) 883-2747

JAMES R. GARY & Co. Ltd.

REALTORS* & ESTATE AGENTS



DON ROSS, CREA

CERTIFIED REAL ESTATE APPRAISER

REALTOR-ASSOCIATE*

21747 Erwin Street

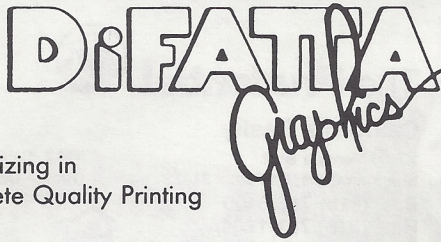
Woodland Hills, CA 91367-3699

Bus: (818) 703-6100

Res: (818) 998-6594

Fax: (818) 703-1870

SUPPORT OUR ADVERTISERS!



Specializing in
Complete Quality Printing

5920 LEMONA AVENUE • VAN NUYS, CA 91411
(818) 782-9883



FLIP SMITH

Formerly
GLOBE TIRE
7735 Sepulveda Blvd.
Van Nuys, CA 91405
(818) 786-8686



MACHINE SHOP and BALANCING

Monday thru Friday 8 a.m. to 7 p.m.
Saturday 9 to 6 - Sunday 10 to 4

10241 Woodley (At Devonshire)

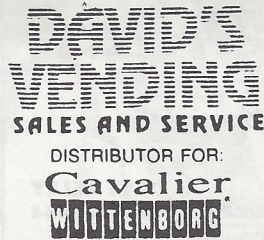
Domestic &
Foreign
Parts & Supplies



(818)
894-6441

Sepulveda, CA 91343

RAFFLE PRIZE DONOR



DISTRIBUTOR FOR:



coinco • *Amana*
800 S. San Fernando Blvd
Burbank, California 9150

(818) 848-8703
DAVID SATEL

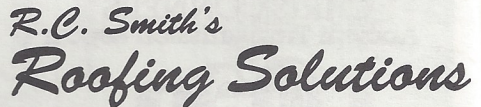
Older Cars
A Specialty

4 x 4's and
Motorhomes

Russell Sylvis, Inc.
Transmissions
Repaired • Rebuilt

(805) 527-4387

4657 Barnard St.
Simi Valley, CA



Roofing & Waterproofing • Complete Maintenance Service

8707-D Lindley Ave., Ste. 199, Northridge, CA 91325
Lic. #356650 (818) 718-2313

Auto • Homeowners

- ANTIQUE CARS -

ED HARDIN INSURANCE

Business • Life • Health • Aircraft



Call us for your Insurance needs!

(818) 363-7864

BATTERY TENDER

~~\$45.00~~
~~vs club price \$49.95~~

THE SAFE AND RELIABLE WAY TO KEEP YOUR
CAR BATTERY AUTOMATICALLY CHARGED UP
AND ALSO EXTEND ITS LIFE.

6 VOLT OR 12 VOLT MODELS
(\$59.50 AFTER DEC. 93)

ALLAN FRANKLIN
(818) 842-2230

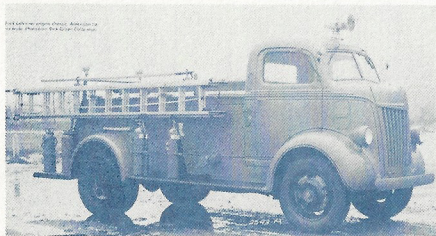
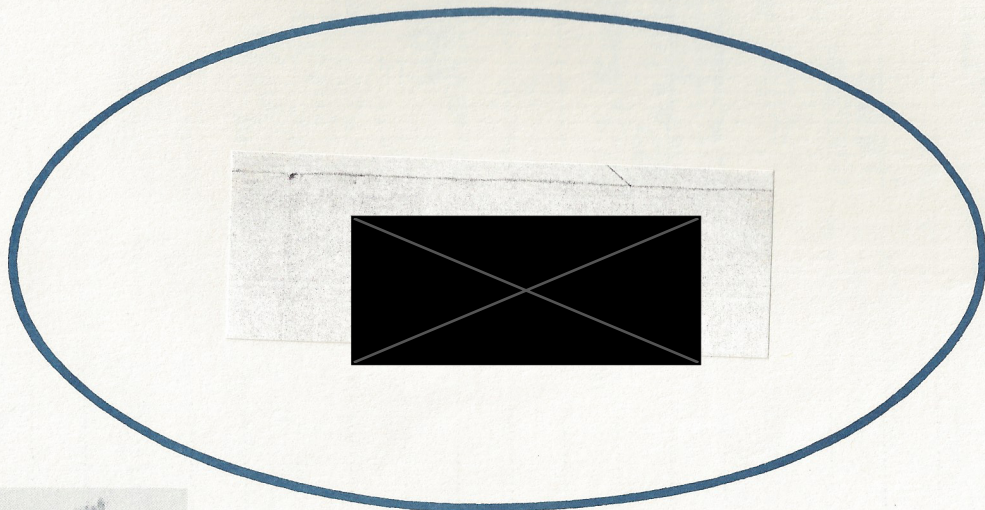
PAST PRESIDENTS

JIM ROWE.....	1971
DOUG PETERSON	1972
DON DURKEE	1974
ED WARNOCK	1975
JOHN BUSK.....	1976
CHIP WERSTEIN	1977
STAN MARSAJE.....	1978
BOB DRAKE	1979
BILL CULP.....	1979
AL SPENCER.....	1980
LARRY CAPLAN	1981
BOB ROSE	1982
DON DURKEE	1983
PAUL KIRK	1984
KENT LOWRY	1985
DAVE SANBORN.....	1986
JOHN KEMMERER	1987
DUDLEY OCHSNER.....	1988
JERRY JENSEN	1989
JERRY JENSEN	1990
JOE DiFATTA	1991
CHUCK SHUBB.....	1992
CHUCK SHUBB.....	1993

Meetings are held on the first Sunday of every month at 7:00 p.m.

The Valley  **'s**

5920 LEMONA AVE., VAN NUYS, CA 91411



1944 Ford Cab over Fire Truck